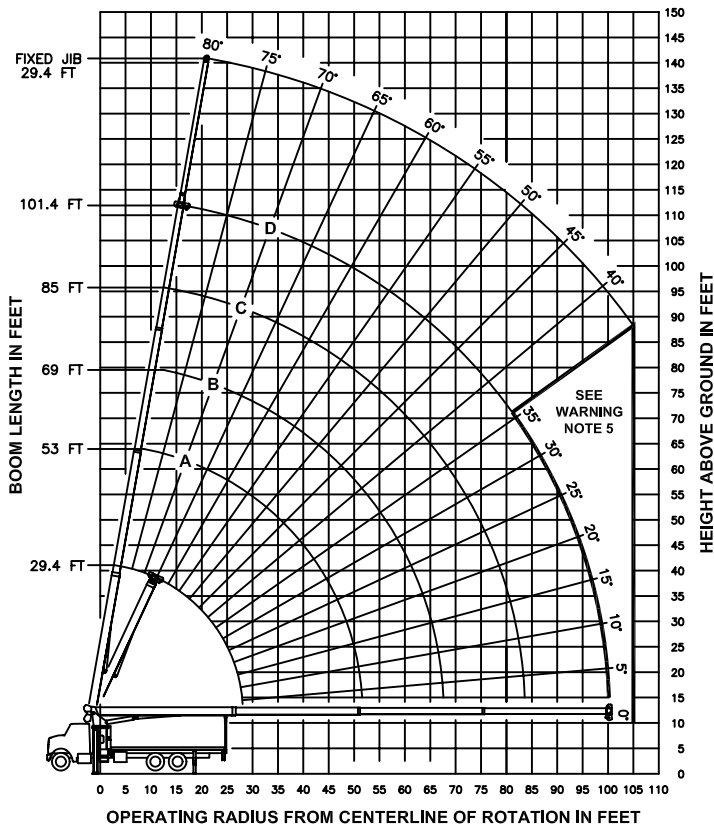


RANGE DIAGRAM



HEIGHT ABOVE GROUND IN FEET

OPERATING RADIUS FROM CENTERLINE OF ROTATION IN FEET

LMI OPERATING CODES

- SETTING CRANE CONFIGURATION SETTING CRANE WITH PERSONNEL LIFTING PLATFORM
- #1 --- MAIN BOOM
 - #2 --- FIXED JIB
 - #5 --- PERSONNEL LIFTING PLATFORM ON MAIN BOOM
 - #6 --- PERSONNEL LIFTING PLATFORM ON FIXED JIB

ALLOWABLE LINE PULL

1 PART LINE	2 PART LINE	3 PART LINE	4 PART LINE	5 PART LINE	6 PART LINE	7 PART LINE
8500 LBS	17000 LBS	25500 LBS	34000 LBS	42500 LBS	51000 LBS	52000 LBS
7400 LBS	14800 LBS	22200 LBS	29600 LBS	37000 LBS	44400 LBS	51800 LBS

WARNING

ANTI-TWO-BLOCK SYSTEM MUST BE IN GOOD OPERATING CONDITION BEFORE OPERATING CRANE.

REFER TO THE OWNER'S MANUAL.

KEEP AT LEAST 3 WRAPS OF LOAD LINE ON THE DRUM AT ALL TIMES.

9/16" 6X25 HIRC (3.5:1 SF) - 29750 LBS MIN BREAKING STRENGTH

9/16" ROT RESISTANT (5.0:1 SF) - 37000 LBS MIN BREAKING STRENGTH

DEDUCTIONS FROM RATED LOADS FOR LOAD HANDLING DEVICES SUPPLIED BY MANITEX.

- AUXILIARY BLOCK ----- 50 LBS
- AUXILIARY SHEAVE ----- 50 LBS
- OVERHAUL BALL ----- SEE OVERHAUL BALL MFR. NAMEPLATE
- LOAD BLOCK ----- SEE BLOCK MFR. NAMEPLATE
- HOSE REEL ----- 140 LBS
- SWING AROUND JIB ----- SEE LOAD CHART

WARNING

LIFTING OFF THE MAIN BOOM POINT WHILE THE JIB IS ERCTED IS NOT INTENDED OR APPROVED.

LOAD RATINGS IN LBS WITH OUTRIGGERS AND STABILIZERS EXTENDED

JIB LOAD RATINGS WITH OUTRIGGERS AND STABILIZERS EXTENDED

OPERATING HEIGHT	LMI CODE #1								LMI CODE #2				
	LOADED BOOM ANGLE		BOOM LENGTH AND MARKER		1ST		2ND		3RD				
	A	B	C	D	A	B	C	D	OPERATING RADIUS	BOOM ANGLE			
	29.44 FT	53 FT	69 FT	85 FT	101.44 FT							29 FT JIB FOR ALL BOOM LENGTHS	SEE WARNING NOTE 4
5	80	52000											RATED LOAD IN POUNDS
8	74	37390									8		
10	70	31750									10		
12	66	27740	78	14000							12		
14	61	24720	76	14000	80	14000					14		
17	54	21200	72	14000	78	12880					17		
20	46	18030	69	13700	75	11430	79	8920			20		
25	29	14120	63	11070	71	9460	75	8000	79	6000	25		
30			56	9170	66	8210	72	7070	76	5500	30	80	3000
35			49	7850	61	6970	68	6130	73	4980	35	78	2840
40			41	6120	56	5980	65	5320	70	4490	40	76	2620
45			31	4890	51	5020	61	4640	67	4000	45	73	2420
50			17	3950	45	4090	57	4070	64	3580	50	71	2230
55					38	3370	52	3440	61	3200	55	69	2020
60					30	2790	47	2860	57	2850	60	67	1840
65					19	2310	42	2390	54	2430	65	64	1670
70							36	1990	50	2040	70	62	1520
75							29	1650	45	1700	75	59	1380
80							20	1360	41	1420	80	56	1230
85									36	1160	85	53	1080
90									30	950	90	50	950
95									22	750	95	47	830
100									3	570	100	44	690
105											105	40	530
	340 LBS.	190 LBS.	150 LBS.	120 LBS.	100 LBS.	DEDUCTIONS FOR STOWED JIB							

WARNING

- THE OPERATOR MUST READ AND UNDERSTAND THE OWNER'S MANUAL BEFORE OPERATING THIS CRANE.
- POSITIONING OR OPERATION OF CRANE BEYOND AREAS SHOWN ON THIS CHART IS NOT INTENDED OR APPROVED EXCEPT WHERE SPECIFIED IN OWNER'S MANUAL.
- LOADED BOOM ANGLES AT SPECIFIED BOOM LENGTHS GIVE ONLY AN APPROXIMATION OF THE OPERATING RADIUS. THE BOOM ANGLE BEFORE LOADING SHOULD BE GREATER TO ACCOUNT FOR DEFLECTIONS. DO NOT EXCEED THE OPERATING RADIUS FOR RATED LOADS.
- THE OPERATING RADIUS SHOWN IN THE JIB RATING CHART IS FOR FULLY EXTENDED BOOM ONLY. WHEN BOOM IS NOT FULLY EXTENDED, USE ONLY LOADED BOOM ANGLE TO DETERMINE LOAD RATING OF JIB.
- BOOM MUST BE FULLY RETRACTED WHEN JIB IS ERCTED, BEFORE LOWERING BOOM THRU THIS AREA.
- FOR BOOM ANGLES NOT SHOWN ON JIB LOAD RATING CHART, USE RATING OF NEXT LOWER BOOM ANGLE.
- FOR BOOM LENGTHS NOT SHOWN, USE RATING OF NEXT LONGER BOOM LENGTH. FOR RADII NOT SHOWN, USE RATING OF NEXT LONGER RADIUS.
- CRANE LOAD RATINGS ON OUTRIGGERS ARE BASED ON FREELY SUSPENDED LOADS WITH THE MACHINE LEVELED AND STANDING ON A FIRM UNIFORM SUPPORTING SURFACE. NO ATTEMPT SHALL BE MADE TO MOVE A LOAD HORIZONTALLY ON THE GROUND IN ANY DIRECTION.
- PRACTICAL WORKING LOADS DEPEND ON SUPPORTING SURFACE, WIND, AND OTHER FACTORS AFFECTING STABILITY SUCH AS HAZARDOUS SURROUNDINGS, EXPERIENCE OF PERSONNEL, AND PROPER HANDLING, ALL OF WHICH MUST BE TAKEN INTO ACCOUNT BY THE OPERATOR.
- THE MAXIMUM LOAD WHICH MAY BE TELESCOPED IS LIMITED BY HYDRAULIC PRESSURE, BOOM ANGLE, AND BOOM LUBRICATION. IT IS SAFE TO ATTEMPT TO TELESCOPE ANY LOAD WITHIN THE LIMITS OF THE LOAD RATING CHART. BOOM MUST BE FULLY RETRACTED AGAINST BOOM STOPS AT ALL TIMES WHEN LIFTING MINIMUM BOOM LENGTH CAPACITY LOADS.

INFORMATION

- DEDUCTIONS MUST BE MADE FROM RATED LOADS FOR STOWED JIB, OPTIONAL ATTACHMENTS, HOOKS, AND LOADBLOCKS (SEE DEDUCTION CHART). WEIGHTS OF SLINGS AND ALL OTHER LOAD HANDLING DEVICES SHALL BE CONSIDERED A PART OF THE LOAD.
- CRANE LOAD RATINGS WITH OUTRIGGERS ARE BASED ON OUTRIGGERS AND STABILIZERS EXTENDED AND SET WITH MACHINE LEVELED.
- LOAD RATINGS ABOVE THE HEAVY LINE ARE STRUCTURALLY LIMITED CAPACITIES. LOAD RATINGS BELOW THE HEAVY LINE ARE STABILITY LIMITED CAPACITIES AND DO NOT EXCEED 85% OF TIPPING.

DEFINITIONS

- OPERATING RADIUS IS THE HORIZONTAL DISTANCE FROM THE AXIS OF ROTATION TO THE CENTER OF THE VERTICAL HOIST LINE OR TACKLE WITH LOAD APPLIED.
- LOADED BOOM ANGLE AS SHOWN IN THE COLUMN HEADED BY \angle IS THE INCLUDED ANGLE BETWEEN THE HORIZONTAL AND LONGITUDINAL AXES OF THE BOOM BASE AFTER LIFTING RATED LOAD AT RATED RADIUS.

INQUIPCO

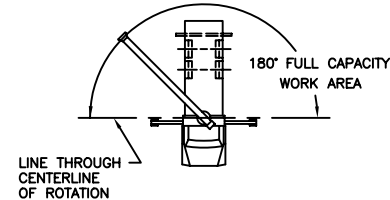
www.inquipco.com | 800-598-3465

MODELS

26101C & 26101T

CRANE MEETS ANSI B30.5 REQUIREMENTS

7300088-001 NR



AREA OF OPERATION