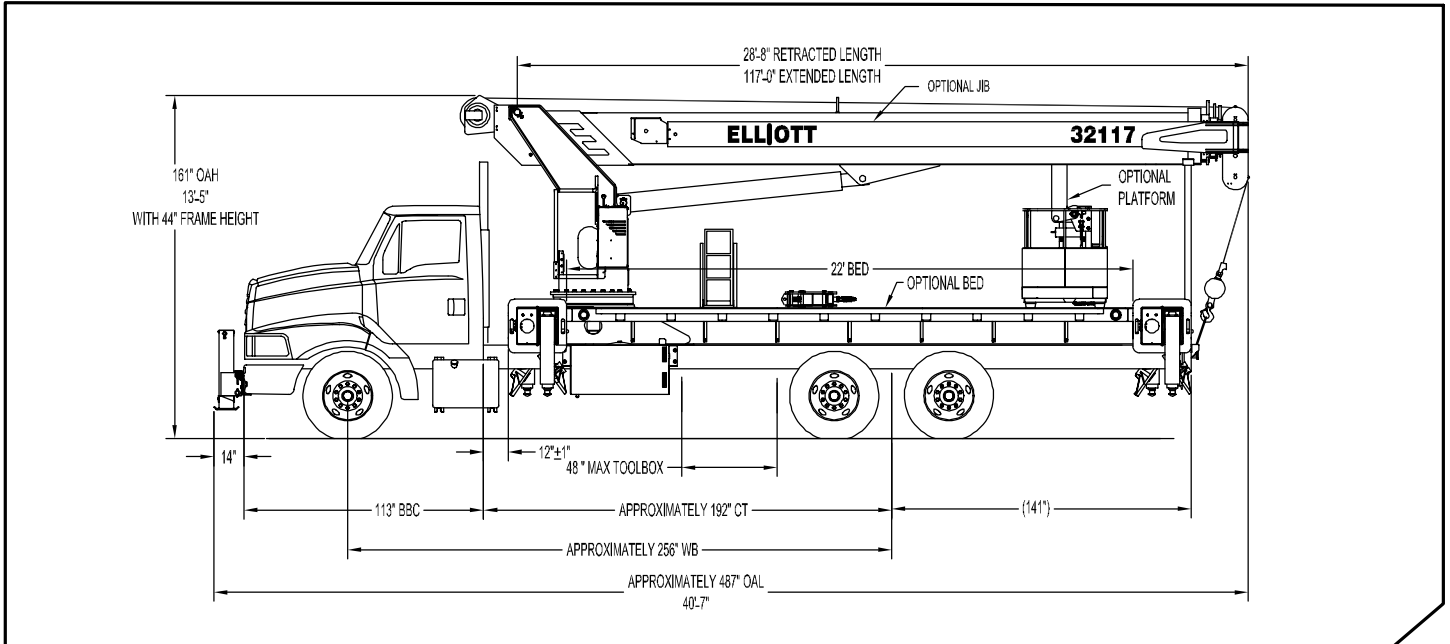


# BoomTruck™ 32117



## GENERAL UNIT DESCRIPTION

**BoomTruck** – When it comes to design and engineering, Elliott’s BoomTruck is generations apart from the traditional crane—making it ideal for the exacting demands of today’s job sites. With an industry-leading 18-ton capacity crane equipped with the 38’ boom option, the BoomTruck delivers high performance with increased efficiency—from its high-speed outrigger set-up, boom extension and retraction to its high-pull winch. Plus our BoomTruck requires very little maintenance thanks to its layaway hoist, 10 percent fewer fittings than competitor models and the industry’s best warranty. That gives you time to enjoy operator amenities like the built-in cup holders and 12-volt charger on the operator console.

Basic unit includes base assembly supporting front mounted rotating turret, hydraulically powered rotation mechanism, oil reservoir, oil, and dual operator console with levers linked to manual hydraulic control valve mounted to pedestal. Base mounted "A" frame link type outriggers hydraulically powered, individually controlled main outriggers. Under frame mounted outriggers for rear stabilization. High strength steel three section hydraulic and cable telescoping boom with one double acting 7" lift cylinder. Boom can be stowed over cab to increase payload & eliminate payload to boom interference on bed. Load Moment Indicator System with display and hydraulic function lockout for load capacities. Power take off and pump drive, pressure gauge, three-section gear pump and holding valves on all cylinders. Control console is equipped with Anti-2-Block system, engine start/stop, variable speed foot throttle, horn, winch burst of speed, and outrigger motion alarm. Additional equipment includes triangle reflector kit, backup alarm, and fire extinguisher. Paint BoomTruck white, outriggers red and bed and boxes black. Installed on chassis, tested and ready to operate. Unit certified to ANSI B30.5 for Mobile and Locomotive cranes.

## Technical Specifications

**Crane Capacity:** 64,000 pounds at five feet load radius.

**Maximum Tip Height:** 129' height (153' with optional 24' jib)

**Control Console:** Rotating turret single operator control station equipped with four single axis control levers for the main crane controls. Operator station includes LMI display, bubble level gauge, engine start/stop switch, signal horn button, variable speed throttle switch, lifting capacity chart, range diagram chart, boom angle indicator, system pressure gauge, 12V DC power source, and cup holder. Independent ground level electric operated outrigger controls.

**Boom:** Five-section, fully proportional, high strength steel plated rectangular tube sections. A maximum boom tip height of 129 feet mounted on a truck. The boom nose contains one floating upper sheave and three lower sheaves. Assembly includes heavy-duty cylinder fittings, pivot pins, and replaceable wear pads.

**Winch:** Mounted at the base of the boom for a long fleet angle and flat level spooling of cable. Winch is driven by a planetary reducer and powered by a hydraulic motor. Burst-of-speed winch provides increased line speed. The winch brake is spring applied, pressure release design. Supplied with 425' of 9/16" diameter rotation resistant wire rope with a single line pull of 8,900 pounds, and a downhaul ball with swivel hook for single part line.

**Load Moment Indicator System:** LMI system senses hoist cylinder pressures, boom length and boom angle with hydraulic function lockout. The display console is equipped with an integrated bar graph showing crane utilization, boom angle or boom length, a mode select controls for main boom and jib operation, and an anti-two block with an audio/visual warning and shut-off functions to limit hook-boom point contact.

**Outriggers:** Two sets of out and down overframe outriggers with 20 foot span. Outriggers are configured for full span or mid span operation. Outriggers equipped with ball socket aluminum removable pads that stow on vertical outrigger legs.

**Frame:** Full length, all welded rigid 4-plate design sub-frame. Sub-frame allows for bolt-on addition 22' bed wings, with top plate of subbase serving as portion of the bed deck, to form a three-piece bed.

**Turret:** Turret is one-piece weldment. Turret rotated on large diameter ball bearing.

**Rotation:** Hydraulic motor drives turret through double reduction planetary swing drive for 372-degree non-continuous rotation. The swing drive system has a spring applied, pressure release brake.

**Boom Extension:** Incorporates a 2-stage hydraulic extension cylinder, attached to the largest boom section, with a proportional cable extension system driving the outermost sections.

**Lift:** One double acting full displacement, long stroke cylinder provides smooth and stable boom elevation. Holding valve prevents boom from lowering in event of hose failure.

**Cylinders:** All cylinders use microhoned cylinder tubing, chrome shafts, top grade packing and protective rod wipers. Cylinder-mounted holding valves provided on all load-holding cylinders.

**Hoses:** All high-pressure hose is wire braid reinforced with a minimum safety factor of 4 to 1.

**Oil Tank Capacity:** 120 gallon mounted to truck frame on roadside.

**Hydraulic System:** Equipped with cable-shift PTO, piston pump, SAE O-ring face seals on pressure lines, and a 10-micron return line filter. The control valve distributes all flow to hoist system, swing circuit, and other crane functions. System is closed center type.

**Cab Equipment:** PTO cable and switch with indicator light installed in truck cab. U/L approved 5:BC dry chemical fire extinguisher installed in truck cab.

**Operator Manual:** One copy of operation, maintenance, safety and parts manual provided with each unit.

**Installation:** Unit installed on customer's truck, painted, system and tank filled with oil, tested, inspected, certified and ready to operate.

**Standard Paint:** Paint BoomTruck white, outriggers red, and bed and boxes black.

**Bumper:** Bureau of Motor Carrier Safety rear bumper.

**Weight:** Approximately 27,300 lbs. with 22' steel floor bed, less truck.

**Truck Chassis Requirements:** Approximately 192" C.A., 20,000 lb. front axle, 34,000 lb. rear axle, and 54,000 lb. GVWR required. Trucks must have extended rear frame, increased cooling, heavy duty front and rear springs, 12V electrical system with high capacity alternator, cab clearance stop/tail/backup lights, and I.D. lamps. Additional equipment to consider: front tow hook, pintle hook, mud and snow tires for highway use. Recommended GVWR is minimum for BoomTruck with flatbed only. Contact factory when additional equipment is to be added.

## Options

24' telescopic jib

Radio remote control crane operation

Radio operated remote for outrigger setup

Open seated controls and cab (rear mount)

Outrigger interlock system to allow working over one side of crane

Hook block for 2/3-part line load

Hook block for 4 part line load

Rear mount

Tool boxes

Front jack for 360 degree crane operation

Steel gravity level platform

Continuous rotation

Oil Cooler

Miscellaneous Options: Contact factory for details



4427 South 76th Circle  
Omaha, NE 68127  
Phone: 402-592-4500  
Fax: 402-592-4553  
Email: info@elliottequip.com  
[www.elliottequip.com](http://www.elliottequip.com)



Las Vegas • San Bernardino

**RENTALS / SALES / PARTS / SERVICE**

1-800-598-3465

LAS VEGAS 2730 N. HELLIS BLVD. LAS VEGAS, NV 89115

SAN BERNARDINO 1185 E. COOLEY AVENUE SAN BERNARDINO, CA 92408

[WWW.INQUIPCO.COM](http://WWW.INQUIPCO.COM)

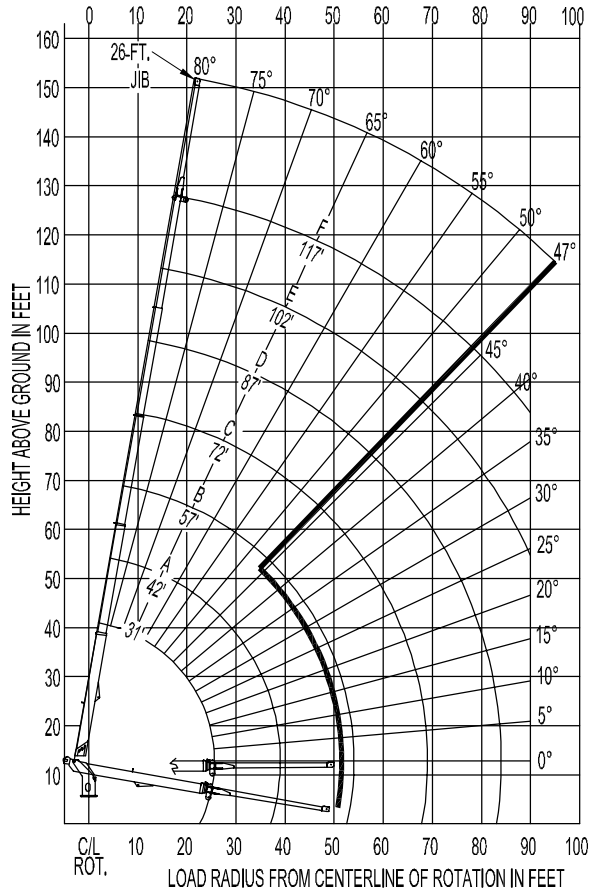
Notes:

Notes:

**PRELIMINARY MAIN BOOM LOAD RATINGS**

LOAD RATINGS IN LB WITH OUTRIGGERS AND STABILIZERS EXTENDED														
LOAD RADIUS IN FEET	LOADED BOOM ANGLE 28-ft	LOADED BOOM ANGLE 42-ft	A	LOADED BOOM ANGLE 57-ft	B	LOADED BOOM ANGLE 72-ft	C	LOADED BOOM ANGLE 87-ft	D	LOADED BOOM ANGLE 102-ft	E	LOADED BOOM ANGLE 117-ft	F	
5	79	64,000												
6	77	54,000												
8	72.5	42,000												
10	68	35,000	75.5	26,000	79.5	25,000								
12	63.5	30,000	72.5	27,500	77.5	25,000								
14	58.5	26,500	69.5	25,000	75.5	23,800	78.5	20,000						
16	53	23,500	66.5	22,800	73	22,200	77	19,000	79.5	17,500				
18	47.5	20,000	63.5	20,400	71	20,800	75	18,200	78	16,100	79.5	15,000		
20	41	16,500	60	18,000	69	19,100	73.5	17,000	76.5	14,500	78.5	13,800		
25			51.5	14,000	63	15,300	69	14,000	73	13,000	75.5	11,800	77.5	8,400
30			41.5	10,000	57	12,300	65	12,000	69.5	11,800	72.5	10,200	75.5	8,200
35					50.5	10,450	60	11,000	66	10,000	69.5	8,900	72.5	7,700
40					44	8,500	56	8,400	62.5	8,200	67	7,800	70	7,250
45					35.5	6,800	50.5	6,800	58.5	7,000	63.5	6,950	67.5	6,250
50							45	5,100	54.5	5,300	60.5	5,500	64.5	5,200
55							38.5	4,200	50	4,300	57	4,350	62	4,200
60							31.5	2,800	45.5	3,200	53.5	3,250	59	3,250
65							21.5	2,400	40.5	2,600	50	2,750	56	2,750
70									35	2,000	46	2,150	53	2,150
75									28.5	1,400	42	1,600	49.5	1,650
80											37	1,000	46.5	1,200
85											32	800	42.5	800
90												39	500	
	0	8,500	0	4,700	0	2,600								
DEDUCTIONS FOR STOWED LB (R)		550	350	300	250	200	150	100						

**PRELIMINARY RANGE DIAGRAM WITH FULL SPAN OUTRIGGERS**



**THIS AERIAL DEVICE IS NON-INSULATING. IT PROVIDES NO ELECTRICAL PROTECTION. CONTACT WITH OR INADEQUATE CLEARANCE TO AN ENERGIZED LINE OR APPARATUS IS AN ELECTROCUTION HAZARD.**