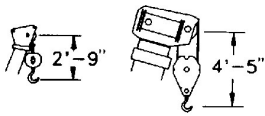


# Range Diagram and Lifting Capacity | RT335-1

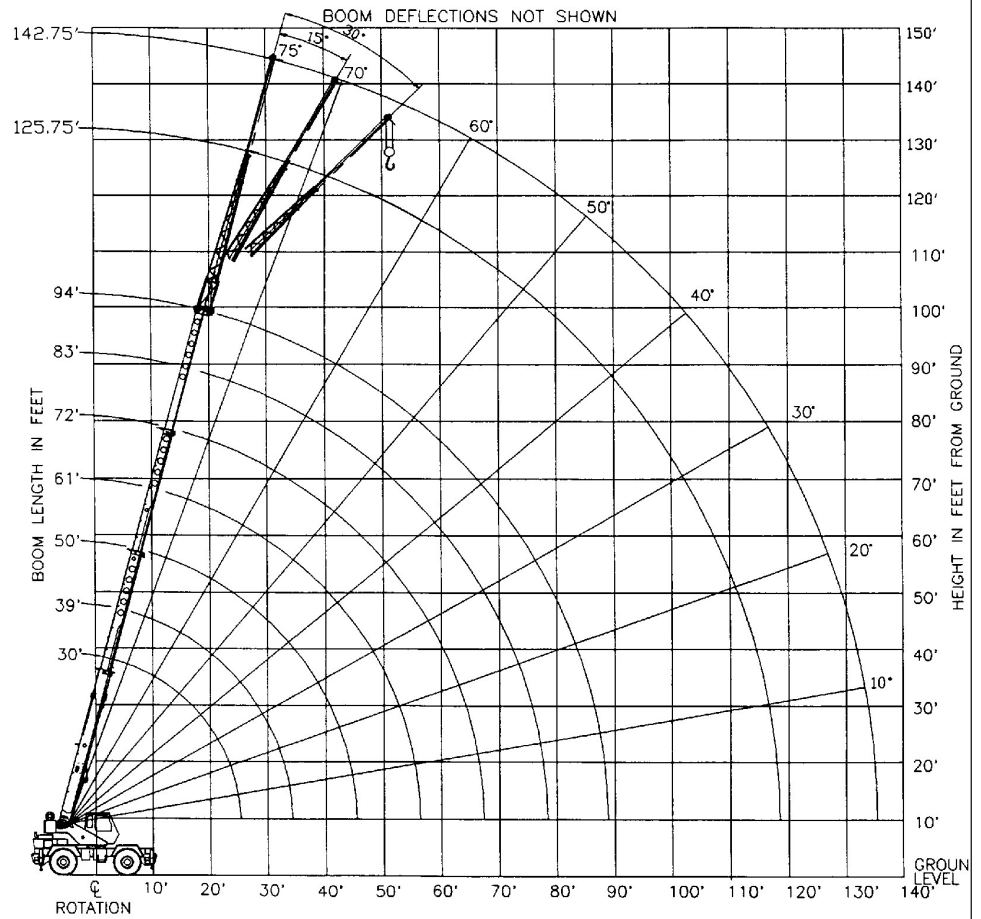
## 35 TON LIFTING CAPACITY

### RANGE DIAGRAM 30' - 94' BOOM



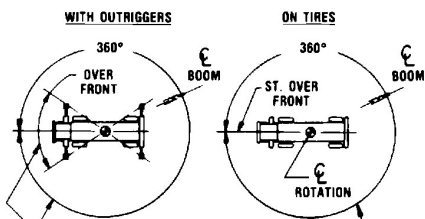
DIMENSIONS ARE FOR LARGEST FACTORY FURNISHED HOOK BLOCK AND HOOK & BALL, WITH ANTI-TWO BLOCK ACTIVATED

COUNTER WEIGHT	W/AUX. WINCH 8,900 LB W/O AUX. WINCH 10,000 LB
BOOM LENGTH	30'-94'
OUTRIGGER SPREAD	22'
STABILITY PERCENTAGE	ON OUTRIGGERS 85% ON TIRES 75%
PCSA CLASS	10-156



## CRANE WORKING CONDITIONS

### CRANE WORKING CONDITIONS



THESE LINES DETERMINE THE LIMITS OF WORKING POSITIONS WHICH CORRESPOND TO THOSE SHOWN ON THE CRANE CAPACITY CHART.

## REDUCTION IN MAIN BOOM CAPACITY

All jib in stowed position	0 lb
Aux. boom in head sheave	100 lb

## HOOK BLOCK WEIGHTS

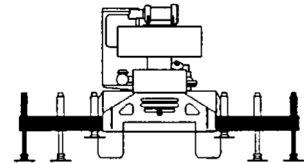
Hook and ball	239 lb
Hook block (3 sheave)	670 lb
Hook block (4 sheave)	690 lb

**LIFTING CAPACITIES** CAUTION: Do not use this specification sheet as a load rating chart. The format of data is not consistent with the machine chart and may be subject to change

**ON OUTRIGGERS - FULLY EXTENDED**

LOAD RADIUS (FT)	BOOM LENGTH 30'			BOOM LENGTH 39'			BOOM LENGTH 50'			LOAD RADIUS (FT)
	LOADED BOOM ANGLE (DEG)	OVER FRONT (LB)	360° (LB)	LOADED BOOM ANGLE (DEG)	OVER FRONT (LB)	360° (LB)	LOADED BOOM ANGLE (DEG)	OVER FRONT (LS)	360° (LB)	
10	63.0	70,000*	70,000*	69.4	46,600*	46,600*				10
12	58.5	60,800*	60,800*	66.2	46,600*	46,600*	71.7	46,600*	46,600*	12
15	51.4	50,600*	50,600*	61.2	46,600*	46,600*	68.0	44,300*	44,300*	15
20	37.4	36,100*	36,100*	52.3	36,900*	36,900*	61.6	37,500*	37,500*	20
25	13.7	27,300*	27,300*	42.0	28,200*	28,200*	54.8	28,800*	28,800*	25
30	**			28.8	22,300*	22,300*	47.3	22,900*	22,900*	30
35				**			38.7	18,800*	18,800*	35
40							27.9	15,600*	15,600*	40
45							7.9	13,100*	13,100*	45
50							**			50
55										55
60										60
65										65
70										70
75										75
80										80
85										85
90										90

**USE THESE CHARTS ONLY WHEN ALL OUTRIGGERS ARE FULLY EXTENDED**



LOAD RADIUS (FT)	BOOM LENGTH 61'			BOOM LENGTH 72'			BOOM LENGTH 83'			BOOM LENGTH 52'			LOAD RADIUS (FT)
	LOADED BOOM ANGLE (DEG)	OVER FRONT (LB)	360° (LB)	LOADED BOOM ANGLE (DEG)	OVER FRONT (LB)	360° (LB)	LOADED BOOM ANGLE (DEG)	OVER FRONT (LB)	360° (LB)	LOADED BOOM ANGLE (DEG)	OVER FRONT (LB)	360° (LB)	
10													10
12													12
15	72.1	38,100*	38,100*										15
20	67.1	33,000*	33,000*	70.8	27,400*	27,400*							20
25	61.9	27,900*	27,900*	66.5	23,100*	23,100*	69.8	21,800*	21,800*	72.2	1,500*	17,500*	25
30	56.3	23,300*	23,300*	62.0	19,900*	19,900*	66.0	18,300*	18,300*	69.0	15,000*	15,000*	30
35	50.4	19,100*	19,100*	57.4	17,400*	17,400*	62.2	15,900*	15,900*	65.7	13,100*	13,100*	35
40	43.9	16,000*	16,000*	52.5	15,400*	15,400*	58.1	13,800*	13,800*	62.2	11,500*	11,500*	40
45	36.5	13,500*	13,500*	47.2	13,800*	13,800*	53.9	12,100*	12,100*	58.7	10,100*	10,100*	45
50	27.3	11,500*	11,500*	41.4	11,800*	11,800*	49.5	10,900*	10,900*	55.1	9,000*	9,000*	50
55	13.0	9,900*	9,900*	34.8	10,200*	10,200*	44.7	9,700*	9,700*	51.2	8,200*	8,200*	55
60	**			26.9	8,800*	8,800*	39.5	8,800*	8,800*	47.2	7,300*	7,300*	60
65				15.5	7,700*	7,700*	33.6	7,900*	7,800*	42.8	6,600*	6,600*	65
70				**			26.6	6,900*	6,800*	38.0	6,000*	6,000*	70
75							17.0	5,900*	5,800*	32.7	5,500*	5,500*	75
80							**			26.4	5,000*	5,000*	80
85										18.1	4,600*	4,500*	85
90										**			90

**\*\*MAXIMUM CAPACITY AT 0 DEGREE BOOM ANGLE**

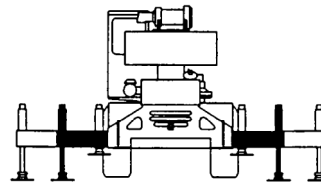
BOOM LENGTH 30'			BOOM LENGTH 39'			BOOM LENGTH 50'			BOOM LENGTH 61'			BOOM LENGTH 72'			BOOM LENGTH 83'			BOOM LENGTH 94'		
LOAD RADIUS (FT)	OVER FRONT (LB)	360° (LB)	LOAD RADIUS (FT)	OVER FRONT (LB)	360° (LB)	LOAD RADIUS (FT)	OVER FRONT (LB)	360° (LB)	LOAD RADIUS (FT)	OVER FRONT (LB)	360° (LB)	LOAD RADIUS (FT)	OVER FRONT (LB)	360° (LB)	LOAD RADIUS (FT)	OVER FRONT (LB)	360° (LB)	LOAD RADIUS (FT)	OVER FRONT (LB)	360° (LB)
25.6	26,300	26,300	34.3	18,500	18,500	45.3	12,900	12,900	56.3	9,500	9,500	67.3	7,200	7,100	78.3	5,300	5,200	89.3	4,000	3,900

**LIFTING CAPACITIES** CAUTION: Do not use this specification sheet as a load rating chart. The format of data is not consistent with the machine chart and may be subject to change

**ON OUTRIGGERS - MID POSITION**

LOAD RADIUS (FT)	BOOM LENGTH 30'		BOOM LENGTH 39'		BOOM LENGTH 50'		LOAD RADIUS (FT)
	LOADED BOOM ANGLE (DEG)	360° (LB)	LOADED BOOM ANGLE (DEG)	360° (LB)	LOADED BOOM ANGLE (DEG)	360° (LB)	
10	63.0	70,000*	69.4	46,600*			10
12	58.5	60,800*	66.2	46,600*	71.7	46,600*	12
15	51.4	50,600*	61.2	46,600*	68.0	44,300*	15
20	37.4	33,000	52.3	33,800	61.6	34,300	20
25	13.7	21,200	42.0	22,400	54.8	22,800	25
30	**		28.8	15,900	47.3	16,500	30
35			**		38.7	12,500	35
40					27.9	9,600	40
45					7.9	7,400	45
50					**		50
55							55
60							60
65							65
70							70
75							75
80							80
85							85
90							90

**USE THESE CHARTS ONLY WHEN ALL OUTRIGGERS ARE PINNED IN MID POSITION**



LOAD RADIUS (FT)	BOOM LENGTH 61'		BOOM LENGTH 72'		BOOM LENGTH 83'		BOOM LENGTH 94'		LOAD RADIUS (FT)
	LOADED BOOM ANGLE (DEG)	360° (LB)	LOADED BOOM ANGLE (DEG)	360° (LB)	LOADED BOOM ANGLE (DEG)	360° (LB)	LOADED BOOM ANGLE (DEG)	360° (LB)	
10									10
12									12
15	72.1	38,100*							15
20	67.1	33,000*	70.8	27,400*					20
25	61.9	23,100	66.5	23,100*	69.8	21,800*	72.2	17,500*	25
30	56.3	16,800	62.0	17,000	66.0	17,100	69.0	15,000*	30
35	50.4	12,800	57.4	12,900	62.2	13,100	65.7	13,100*	35
40	43.9	10,000	52.5	10,200	58.1	10,300	62.2	10,400	40
45	36.5	7,900	47.2	8,100	53.9	8,300	58.7	8,300	45
50	27.3	6,300	41.4	6,600	49.5	6,700	55.1	6,800	50
55	13.0	5,000	34.8	5,300	44.7	5,500	51.2	5,600	55
60	**		26.9	4,300	39.5	4,500	47.2	4,600	60
65			15.5	3,400	33.6	3,600	42.8	3,700	65
70			**		26.6	2,900	38.0	3,000	70
75					17.0	2,300	32.7	2,400	75
80					**		26.4	1,900	80
85							18.1	1,400	85
90							**		90

**\*\*MAXIMUM CAPACITY AT 0 DEGREE BOOM ANGLE**

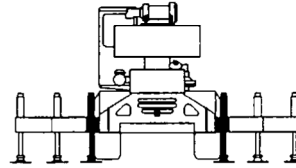
BOOM LENGTH 30'		BOOM LENGTH 39'		BOOM LENGTH 50'		BOOM LENGTH 61'		BOOM LENGTH 72'		BOOM LENGTH 83'		BOOM LENGTH 94'	
LOAD RADIUS (FT)	360° (LB)	LOAD RADIUS (FT)	360° (LB)	LOAD RADIUS (FT)	360° (LB)	LOAD RADIUS (FT)	360° (LB)	LOAD RADIUS (FT)	360° (LB)	LOAD RADIUS (FT)	360° (LB)	LOAD RADIUS (FT)	360° (LB)
25.6	20,100	34.3	12,100	45.3	7,300	56.3	4,700	67.3	3,000	78.3	1,900	89.3	1,000

**LIFTING CAPACITIES** CAUTION: Do not use this specification sheet as a load rating chart. The format of data is not consistent with the machine chart and may be subject to change

**ON OUTRIGGERS - RETRACTED**

LOAD RADIUS (FT)	BOOM LENGTH 30'		BOOM LENGTH 39'		BOOM LENGTH 50'		LOAD RADIUS (FT)
	LOADED BOOM ANGLE (DEG)	360° (LB)	LOADED BOOM ANGLE (DEG)	360° (LB)	LOADED BOOM ANGLE (DEG)	360° (LB)	
10	63.0	51,000	69.4	46,600*			10
12	58.5	35,800	66.2	36,500	71.7	37,100	12
15	51.4	23,800	61.2	24,500	68.0	25,000	15
20	37.4	14,000	52.3	14,800	61.6	15,300	20
25	13.7	8,800	42.0	9,800	54.8	10,400	25
30	**		28.8	6,700	47.3	7,300	30
35			**		38.7	5,200	35
40					27.9	3,700	40
45					7.9	2,400	45
50					**		50
55							55
60							60

**USE THESE CHARTS WHEN ALL OUTRIGGER BEAMS ARE NOT IN EITHER THE MID OR FULLY EXTENDED POSITION**



LOAD RADIUS (FT)	BOOM LENGTH 61'		BOOM LENGTH 72'		BOOM LENGTH 83'		BOOM LENGTH 94'		LOAD RADIUS (FT)
	LOADED BOOM ANGLE (DEG)	360° (LB)	LOADED BOOM ANGLE (DEG)	360° (LB)	LOADED BOOM ANGLE (DEG)	360° (LB)	LOADED BOOM ANGLE (DEG)	360° (LB)	
10									10
12									12
15	72.1	25,300							15
20	67.1	15,600	70.8	15,800					20
25	61.9	10,600	66.5	10,800	69.8	10,900	72.2	11,000	25
30	56.3	7,600	62.0	7,800	66.0	7,900	69.0	8,000	30
35	50.4	5,500	57.4	5,700	62.2	5,800	65.7	5,900	35
40	43.9	4,000	52.5	4,200	58.1	4,400	62.2	4,500	40
45	36.5	2,900	47.2	3,100	53.9	3,300	58.7	3,400	45
50	27.3	2,000	41.4	2,200	49.5	2,400	55.1	2,500	50
55	13.0	1,200	34.8	1,500	44.7	1,700	51.2	1,800	55
60	**		26.9	900	39.5	1,100	47.2	1,200	60

**\*\*MAXIMUM CAPACITY AT 0 DEGREE BOOM ANGLE**

BOOM LENGTH 30'		BOOM LENGTH 39'		BOOM LENGTH 50'		BOOM LENGTH 61'		BOOM LENGTH 72'		BOOM LENGTH 83'		BOOM LENGTH 94'	
LOAD RADIUS (FT)	360° (LB)	LOAD RADIUS (FT)	360° (LB)	LOAD RADIUS (FT)	360° (LB)	LOAD RADIUS (FT)	360° (LB)	LOAD RADIUS (FT)	360° (LB)	LOAD RADIUS (FT)	360° (LB)	LOAD RADIUS (FT)	360° (LB)
25.6	8,200	34.3	4,700	45.3	2,300	56.3	1,000						



**LIFTING CAPACITIES**

CAUTION: Do not use this specification sheet as a load rating chart. The format of data is not consistent with the machine chart and may be subject to change

**SIDE STOW JIB ON FULLY EXTENDED OUTRIGGERS**

LOADED BOOM ANGLE (DEG)	26' OFFSETTABLE JIB/NO PULL OUT INSTALLED						43' OFFSETTABLE JIB/PULL OUT RETRACTED						LOADED BOOM ANGLE (DEG)
	0° OFFSET		15° OFFSET		30° OFFSET		0° OFFSET		15° OFFSET		30° OFFSET		
	LOAD RADIUS (RE) (FT)	360° (LB)	LOAD RADIUS (RE) (FT)	360° (LB)	LOAD RADIUS (RE) (FT)	360° (LB)	LOAD RADIUS (RE) (FT)	360° (LB)	LOAD RADIUS (RE) (FT)	360° (LB)	LOAD RADIUS (RE) (FT)	360° (LB)	
75	38	9,100*	46	7,700*	52	5,900*	41	5,100*	55	3,400*	62	2,700*	75
73	42	8,600*	49	7,300*	55	5,800*	47	4,800*	59	3,300*	68	2,700*	73
71	45	8,200*	52	7,000*	58	5,600*	52	4,500*	64	3,200*	73	2,600*	71
68	50	7,800*	58	6,200*	63	5,100*	60	4,100*	70	3,000*	79	2,500*	68
65	56	6,700*	63	5,500*	68	4,600*	66	3,800*	76	2,900*	84	2,500*	65
62	61	5,900*	68	4,900*	73	4,200*	71	3,600*	81	2,800*	88	2,400*	62
59	66	5,200*	73	4,400*	77	3,800*	77	3,400*	86	2,700*	93	2,400*	59
55	73	4,400*	79	3,900*	83	3,400*	84	3,100*	93	2,600*	99	2,300*	55
51	79	3,800*	85	3,400*	88	3,100*	91	2,900*	99	2,500*	105	2,300*	51
47	86	3,300*	91	3,000*	94	2,800*	100	2,800*	106	2,400*	110	2,200*	47
43	92	2,900*	97	2,700*	99	2,500*	109	2,400*	112	2,200*	116	2,000*	43
38	100	2,400*	103	2,300*	105	2,200*	116	2,100*	119	1,900*	122	1,800*	38
32	106	2,100*	109	2,000*	110	1,900*	122	1,800*	126	1,600*	127	1,500*	32
25	113	1,700*	114	1,700*			129	1,500*	131	1,400*			25
17	118	1,500*	118	1,500*			133	1,300*	135	1,200*			17
0	121	1,200*					138	1,000*					0

**Notes For Jib Capacities:**

- A. For all boom lengths less than the maximum with a jib erected, the rated loads are determined by boom angle only in the appropriate column.
- B. For boom angle not shown, use the capacity of the next lower boom angle.
- C. Listed radii are for extended main boom only.

**ON TIRES**

RADIUS (FT)	MAX BOOM LENGTH (FT)	23.5R25**				21:00 X 25-28PR			
		PICK & CARRY				PICK & CARRY			
		STATIONARY	CREEP	2.5 MPH		STATIONARY	CREEP	2.5 MPH	
		360°	STRAIGHT OVER FRONT			360°	STRAIGHT OVER FRONT		
10	30	30,900	63,700*	46,700*	39,000*	30,500	73,700*	56,000*	47,400*
12	30	24,900	55,500	40,600*	33,800*	25,400	64,500*	48,900*	41,200*
15	39	19,100	43,100	33,600*	27,800*	18,900	46,800	40,700*	34,100*
20	39	12,400	24,600	24,600	20,900*	11,600	24,900	24,900	24,900
25	50	8,400	16,400	16,400	16,100	7,600	16,500	16,500	16,500
30	50	5,600	12,500	12,500	12,500	5,200	12,600	12,600	12,600
35	50	4,300	9,600	9,600	9,600	3,900	9,600	9,600	9,600
40	61	3,000	7,500	7,500	7,500	2,800	7,600	7,600	7,600
45	61	2,300	6,100	6,100	6,100	2,100	6,200	6,200	6,200
50	61	1,600	5,000	5,000	5,000	1,400	5,200	5,200	5,200
55	61		4,300	4,300	4,300		4,300	4,300	4,300
60	72		3,500	3,500	3,500		3,600	3,600	3,600
65	72		2,800	2,800	2,800		2,800	2,800	2,800
70	83		2,200	2,200	2,200		2,200	2,200	2,200
75	83		1,800	1,800	1,800		1,900	1,900	1,900
80	94		1,500	1,500	1,500		1,500	1,500	1,500

**Notes For On Tire Capacities:**

- A. For Pick and Carry operations, boom must be centered over the front of the crane with swing brake and lock engaged. Use minimum boom point height and keep load close to ground surface.
- B. The load should be restrained from swinging. NO ON TIRE OPERATION WITH JIB ERRECTED.
- C. Without outriggers, never maneuver the boom beyond listed load radii for applicable tires to ensure stability.
- D. Creep speed is crane movement of less than 200' (61m) in a 30 minute period and not exceeding 1.0 mph (1.6 km/h).
- E. Refer General Notes for additional information.

**RECOMMENDED TIRE PRESSURE**

TIRE SIZE	STATIONARY	CREEP	2 1/2 MPH	TRAVEL
23.5R25.**	24 PSI	94 PSI	94 PSI	76 PSI
21.00 x 25-28 PR	85 PSI	85 PSI	85 PSI	65 PSI

**MAXIMUM PERMISSIBLE HOIST LINE LOAD**

LINE PARTS	1	2	3	4	5	6	7	8
MAX. LOAD	9,080	18,160	27,240	36,320	45,400	54,480	65,560	72,640
BOOM HEAD	2	3-D	2-3	1-4-D	2-3-4	2-3-4-D	1-2-3-4	1-2-3-4-D
HOOK BLOCK	0	3	3-D	1-4	2-3-D	2-3-4	2-3-4-D	1-2-3-4
WIRE ROPE:	5/8" ROTATION RESISTANT COMPACTED STRAND, 18X19 OR 19X19 MINIMUM BREAKING STRENGTH - 22.7 TONS							
	5/8" 6X19 OR 6X37 IWPC IPS PREFORMED RIGHT REGULAR LAY MINIMUM BREAKING STRENGTH - 17.9 TONS							

Las Vegas • San Bernardino

**RENTALS / SALES / PARTS / SERVICE**

**1-800-598-3465**

LAS VEGAS 2730 N. HELLIS BLVD. LAS VEGAS, NV 89115

SAN BERNARDINO 1185 E. COOLEY AVENUE SAN BERNARDINO, CA 92408

**WWW.INQUIPCO.COM**



## General Notes | RT300 Series

### GENERAL

1. Rated loads as shown on Lift Charts pertain to this machine as originally manufactured and equipped. Modifications to the machine or use of optional equipment or other than that specified can result in a reduction of capacity.
2. Construction equipment can be hazardous if improperly operated or maintained. Operation and maintenance of this machine shall be in compliance with the information in the Operator's, Parts and Safety Manuals supplied with this machine. If These manuals are missing, order replacements from the manufacturer through your distributor.
3. These warnings do not constitute all of the operating conditions for the crane. The operator and job site supervision must read the OPERATORS MANUAL, CIMA SAFETY MANUAL, APPLICABLE OSHA REGULATIONS, AND SOCIETY OF MECHANICAL ENGINEERS (ASME) SAFETY STANDINGS FOR CRANES.
4. This crane and its load ratings are in accordance with POWER CRANE & SHOVEL ASSOCIATION, STANDARD NO.4 SAE CRANE LOAD STABILITY TEST CODE J765A, SAE METHOD OF TEST FOR CRANE STRUCTURE J1063 AND APPLICABLE SAFETY CODE FOR CRANES, DERRICKS AND HOISTS, ASME/ANSI B30.5

### DEFINITIONS

1. **LOAD RADIUS** - The horizontal distance from the axis of rotation before loading to the center of the vertical hoist line or tackle with a load applied.
2. **LOADED BOOM ANGLE** - It is the angle between the boom base section and the horizontal, after lifting the rated load at the rated radius. The boom angle before loading should be greater to account for deflections. The loaded boom angle combined with boom length give only an approximation of the operating radius.
3. **WORKING AREA** - Areas measured in a circular arc about the centerline of rotation as shown in the diagram.
4. **FREELY SUSPENDED LOAD** - Load hanging free with no direct external force applied except by the hoist rope.
5. **SIDE LOAD** - Horizontal force applied to the lifted load either on the ground or in the air.
6. **NO LOAD STABILITY LIMIT** - The stability limit radius shown on the range diagrams is the radius beyond which it is not permitted to position the boom, when the boom angle is less than the minimum shown on the applicable load chart, because the machine can overturn without any load.
7. **BOOM SIDE OF CRANE** - The side of the crane over which the boom is positioned when in OVER SIDE working position.

### SET-UP

1. Crane load ratings are based on the crane being leveled and standing on a firm, uniform supporting surface.
2. Crane load ratings on outriggers are based on all outrigger beams being fully extended or in the case of partial extension ratings mechanically pinned in the appropriate position, and the tires free of the supporting surface.
3. Crane load ratings on tires depend on appropriate inflation pressure and the tire conditions. Caution must be exercised when increasing air pressures in tires. Consult Operator's Manual for precautions.
4. Use of jibs, lattice-type boom extensions, or fourth section pullouts extended is not permitted for pick and carry operations.
5. Consult appropriate section of the Operator's and Service Manual for more exact description of hoist line reeving.
6. The use of more parts of line than required by the load may result in having insufficient rope to allow the hook block to reach the ground.
7. Properly maintained wire rope is essential for safe crane operation. Consult Operator's Manual for proper maintenance and inspection requirements.
8. When spin-resistant wire rope is used, the allowable rope loading shall be the breaking strength divided by five (5), unless otherwise specified by the wire rope manufacturer.
9. Do not elevate the boom above 60° unless the boom is positioned in-line with the crane's chassis or the outrigger are extended. Failure to observe this warning may result in loss of stability.

### OPERATION

1. **CRANE LOAD RATINGS MUST NOT BE EXCEEDED. DO NOT ATTEMPT TO TIP THE CRANE TO DETERMINE ALLOWABLE LOADS.**
2. When either radius or boom length, or both, are between listed values, the smaller of the two listed load ratings shall be used.
3. Do not operate at longer radii than those listed on the applicable load rating chart (cross hatched areas shown on range diagrams.)
4. The boom angles shown on the Capacity Chart give an approximation of the operating radius for a specified boom length. The boom angle, before loading, should be greater to account for boom deflection. It may be necessary to retract the boom if maximum boom angle is insufficient to maintain rated radius.
5. Power telescoping boom sections must be extended equally.
6. Rated loads include the weight of hook block, slings, and auxiliary lifting devices. Their weights shall be subtracted from the listed rated load to obtain the net load that can be lifted. When lifting over the jib the weight of any hook block, slings, and auxiliary lifting devices at the boom head must be added to the load. When jibs are erected but unused add two (2) times the weight of any hook block, slings, and auxiliary lifting devices at the jib head to the load.
7. Rated loads do not exceed 85% on outriggers or 75% on tires, of the tipping load as determined by SAE Crane Stability Test Code J765a. Structural strength ratings in chart are indicated with an asterisk (\*).
8. Rated loads are based on freely suspended loads. No attempt shall be made to drag a load horizontally on the ground in any direction.
9. The user shall operate at reduced ratings to allow for adverse job conditions, such as: soft or uneven ground, out of level conditions, high winds, side loads, pendulum action, jerking or sudden stopping of loads, hazardous conditions, experience of personnel, two machine lifts, traveling with loads, electric wires, etc. (side pull on boom or jib is hazardous). Derating of the cranes lifting capacity is required when wind speed exceeds 20 MPH. The center of the lifted load must never be allowed to move more than 3' off the center line of the base boom section due to the effects of wind, inertia, or any combination of the two.  
\*Use 2' off the center line of the base boom for a two section boom, 3' for a three section boom, or 4' for a four section boom.\*
10. The maximum load which can be telescoped is not definable, because of variations in loadings and crane maintenance, but it is permissible to attempt retraction and extension if load ratings are not exceeded.
11. Load ratings are dependent upon the crane being maintained according to manufacturer's specifications.
12. It is recommended that load handling devices, including hooks, and hook blocks, be kept away from boom head at all times.
13. **FOR TRUCK CRANES ONLY:** 360° capacities apply only to machines equipped with a front outrigger jack and all five(5) outrigger jacks properly set. If the front (5th) outrigger jack is not properly set, the work area is restricted to the over side and over rear areas as shown on the Crane Working Positions diagram. Use the 360° load ratings in the overside work areas.
14. Do not lift with outrigger beams positioned between the fully extended and intermediate (pinned) positions.
15. Truck Cranes not equipped with equalizing (bogie) beams between the rear axles may not be used for lifting "on tires". Truck Cranes equipped with equalizing beams and rear air suspension should "dump" the air before lifting "on tires".

### CLAMSHELL, MAGNET, AND CONCRETE BUCKET SERVICE

1. Maximum boom length for clamshell and magnet service is 50'.
2. Weight of clamshell or magnet, plus contents are not to exceed 6,000 lb or 90% of rated lifting capacities, whichever is less. For concrete bucket operation, weight of bucket and load must not exceed 90% of rated lifting capacity.

**TEREX Cranes**  
106-12th Street S.E.  
Waverly, Iowa 50677-9466 USA

TEL (319) 352-3920 FAX (319) 352-5727  
EMAIL inquire@terexwaverly.com  
WEB terex.com

WE RESERVE THE RIGHT TO AMEND THESE SPECIFICATIONS AT ANY TIME WITHOUT NOTICE. THE ONLY WARRANTY APPLICABLE IS OUR STANDARD WRITTEN WARRANTY APPLICABLE WE MAKE NO OTHER WARRANTY, EXPRESSED OR IMPLIED.

©TEREX CRANES, INC 2005

PRINTED IN U.S.A

**INQUIPCO**  
Las Vegas • San Bernardino

**RENTALS / SALES / PARTS / SERVICE**

**1-800-598-3465**

<p>LAS VEGAS 2730 N. HELLIS BLVD. LAS VEGAS, NV 89115</p>	<p>SAN BERNARDINO 1185 E. COOLEY AVENUE SAN BERNARDINO, CA 92408</p>
---	--

**WWW.INQUIPCO.COM**