

 **TEREX CRANES**

TEREX
MODEL NO.
RT 780
HYDRAULIC CRANE
80TON

P.C.S.A. CLASS 10 - 316

LOAD RATINGS

**Do not operate this crane unless
you have read and understood the
information in this book.**

This book must contain 30 pages.

**DO NOT REMOVE THIS BOOK
FROM THE CRANE**

Table of Contents

Part 1 - Misc Information	Page
Hoist Tackle Chart, Tire Inflation Chart, Weights.....	1
Crane Dimensional Diagram.....	2
General Warnings and Definitions.....	3
Set-up and Operational Warnings.....	4,5
Part 2 - Lifts With Outrigger Beams <u>Fully Extended</u>	
Main Boom Lift Capacities.....	6,7
" " " " W/Erected & Unused 33' Jib.....	8,9
" " " " " " " " 57' ".....	10,11
32' Length Jib Lift Capacities.....	12,13
33' Length Jib Lift Capacities.....	14,15
57' Length Jib Lift Capacities.....	16,17
Part 3 - Lifts With Outrigger Beams <u>Extended to Mid-Position & Pinned</u>	
Main Boom Lift Capacities.....	18,19
32' Length Jib Lift Capacities.....	20,21
33' Length Jib Lift Capacities.....	22,23
57' Length Jib Lift Capacities.....	24,25
Part 4 - Lifts With Outrigger Beams <u>Less Than ½ Extended</u>	
Main Boom Lift Capacities.....	26,27
Part 5 - Lifts <u>On Tires</u>	
Lifts Equipped With 29.5x25 28 PR Tires.....	28,29
Part 6 – Hand Signals for Crane Operation	
ANSI B30.5 Standard Hand Signals for Crane Operation.....	30

INFORMATIONAL DATA

HOIST TACKLE CHART

This chart only represents the maximum permissible hoist line load per parts of line. You must refer to the proper lift charts for machine rated loads.

MAXIMUM PERMISSIBLE HOIST LINE LOAD												
LINE PARTS	1	2	3	4	5	6	7	8	9	10	11	12
MAIN & AUX. HOIST	13,800	27,600	41,400	55,200	69,000	82,800	96,600	110,400	124,200	138,000	151,800	160,000

WIRE ROPE: 3/4" ROTATION RESISTANT 34 X 7 COMPACTED STRAND, GRADE 2160, MINIMUM BREAKING STRENGTH 34.5 TONS. WEIGHT 1.24 LBS./FT. 3/4" 6 X 19 OR 6 X 37 IPS IWRC, PREFORMED RIGHT REGULAR LAY MINIMUM BREAKING STRENGTH 25.6 TONS. WEIGHT 1.04 LBS/FT

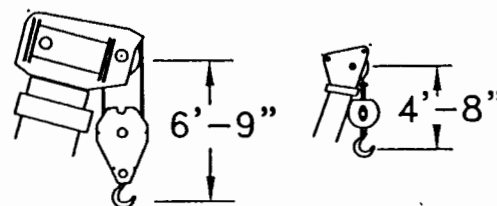
TIRE INFLATION CHART

RECOMMENDED TIRE PRESSURE				
TIRE SIZE	STATIONARY	CREEP	2 1/2 MPH	TRAVEL
29:50 X 25-28 PR	81 PSI	81 PSI	65 PSI	55 PSI

HOOK BLOCK WEIGHTS

HOOK BLOCK WEIGHTS	
HOOK & BALL _____	419
HOOK BLOCK (5 SHEAVE) _____	1608

DIMENSIONS ARE FOR LARGEST KOEHRING FURNISHED HOOK BLOCK AND HEADACHE BALL. WITH ANTI-TWO BLOCK ACTIVATED.



MACHINE EQUIPMENT

1. COUNTERWEIGHT :
 13,660 Lb. Counterweight and 1,540 Lb. slab
 or
 13,660 Lb. Counterweight and auxiliary winch with wire rope
2. OUTRIGGER SPREAD 24ft - 0in. from center of outrigger float to center of outrigger float across the longitudinal axis of the machine.
3. Powered boom length 40ft. retracted to 126ft. extended.
4. Crane height 13ft.-0.82in., length 48ft.-7.20in., width 11ft.-3.69in., Wheelbase 13ft-1.65in.

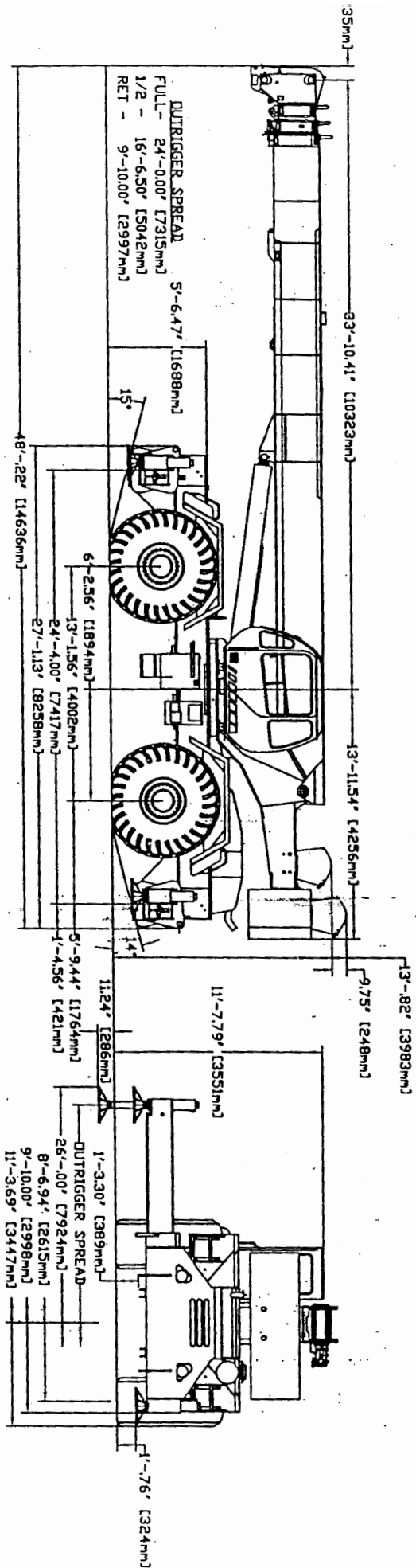
CLAMSHELL, MAGNET, AND CONCRETE BUCKET SERVICE

1. Maximum boom length for clamshell and magnet service is 50 feet.
2. Weight of clamshell or magnet, plus contents are not to exceed 6,000 pounds or 90% of rated lifting capacities, whichever is less. For concrete bucket operation, weight of bucket and load must not exceed 90% of rated lifting capacity.

OUTRIGGER PAD LOADS

1. When lifting loads shown in these capacity charts, no single pad load will exceed 120,000 Lb.

BASIC DIMENSIONS





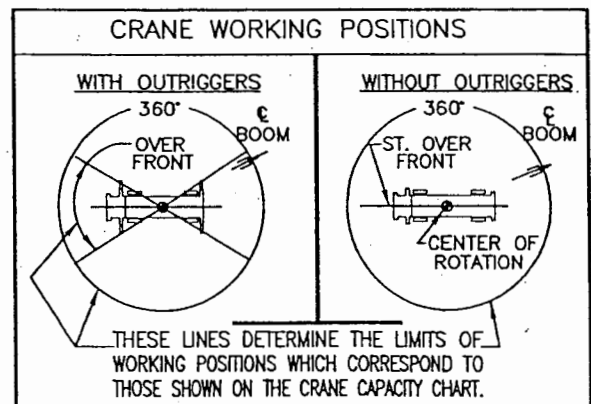
WARNING

GENERAL

1. Rated loads as shown on Lift Charts pertain to this machine as originally manufactured and equipped. Modifications to the machine or use of optional equipment other than that specified can result in a reduction of capacity.
2. Construction equipment can be hazardous if improperly operated or maintained. Operation and maintenance of this machine shall be in compliance with the information in the Operator's, Parts, and Safety Manuals supplied with this machine. If these manuals are missing, order replacements from the manufacturer through your distributor.
3. These warnings do not constitute all of the operating conditions for the crane. The operator and job site supervision must read the OPERATORS MANUAL, CIMA SAFETY MANUAL, APPLICABLE OSHA REGULATIONS AND SOCIETY OF MECHANICAL ENGINEERS (ASME) SAFETY STANDARDS FOR CRANES.
4. This crane and its load ratings are in accordance with POWER CRANE & SHOVEL ASSOCIATION, STANDARD NO. 4, SAE CRANE LOAD STABILITY TEST CODE J-765A, SAE METHOD OF TEST FOR CRANE STRUCTURE J1063 AND APPLICABLE SAFETY CODE FOR CRANES, DERRICKS AND HOIST, ASME/ANSI B30.5.

DEFINITIONS

1. **LOAD RADIUS** — The horizontal distance from the axis of rotation before loading to the center of the vertical hoist line or tackle with a load applied.
2. **LOADED BOOM ANGLE** — It is the angle between the boom base section and the horizontal, after lifting the rated load at the rated radius. The boom angle before loading should be greater to account for deflections. The loaded boom angle combined with the boom length give only an approximation of the operating radius.
3. **WORKING AREA** — Areas measured in a circular arc about the centerline of rotation as shown in the diagram.
4. **FREELY SUSPENDED LOAD** — Load hanging free with no direct external force applied except by the hoist rope.
5. **SIDE LOAD** — Horizontal force applied to the lifted load either on the ground or in the air.
6. **EXTRA-CAUTION ZONE**—Tipping can occur with some boom/jib combinations at radii within this area without any load on the hook.
7. **BOOM SIDE OF CRANE** — The side of the crane over which the boom is positioned when in an OVER SIDE working position.

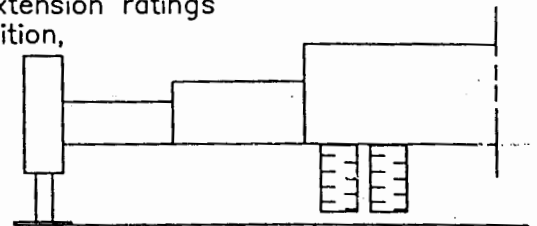




WARNING

SET-UP

1. Crane load ratings are based on the crane being leveled and standing on a firm, uniform supporting surface.
2. Crane load ratings on outriggers are based on all outrigger beams being fully extended, or in the case of partial extension ratings mechanically pinned in the appropriate position, and the tires free of the supporting surface.



3. Crane load ratings on tires depend on appropriate inflation pressure and the tire conditions. Caution must be exercised when increasing air pressures in tires. Consult Operator's Manual for precautions.
4. Use of jibs, lattice-type boom extensions, or fourth section pullouts extended is not permitted for pick and carry operations.
5. Consult appropriate section of the Operator's and Service Manual for more exact description of hoist line reeving.
6. The use of more parts of line than required by the load may result in having insufficient rope to allow the hook block to reach the ground.
7. Properly maintained wire rope is essential for safe crane operation. Consult Operator's Manual for proper maintenance and inspection requirements.
8. When spin-resistant wire rope is used, the allowable rope loading shall be the breaking strength divided by five (5), unless otherwise specified by the wire rope manufacturer.

OPERATION:

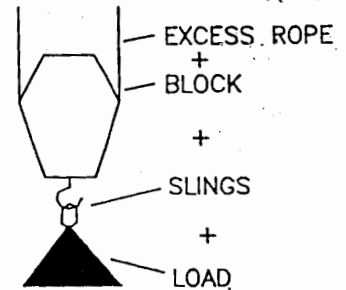
1. CRANE LOAD RATINGS MUST NOT BE EXCEEDED. DO NOT ATTEMPT TO TIP THE CRANE TO DETERMINE ALLOWABLE LOADS.
2. When either radius or boom length, or both, are between listed values, the smaller of the two listed load ratings shall be used.
3. Do not operate at longer radii than those listed on the applicable load rating chart as tipping can occur without a load on the hook.
4. The boom angles shown on the Capacity Chart give an approximation of the operating radius for a specified boom length. The boom angle, before loading, should be greater to account for boom deflection. It may be necessary to retract the boom if maximum boom angle is insufficient to maintain rated radius.
5. Power Telescoping boom sections must be extended equally.



WARNING

6. Rated loads include the weight of hook block, slings, and auxiliary lifting devices. Their weights shall be subtracted from the listed rated load to obtain the net load that can be lifted.

When lifting over the jib the weight of any hook block, slings, and auxiliary lifting devices at the boom head must be added to the load.

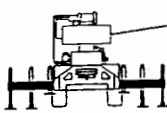


TOTAL RATED LOAD

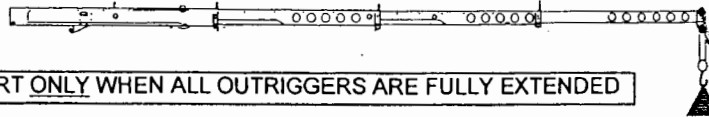
Rated lifting capacities are based on correct reeving. Deduction must be made for excessive reeving. Any reeving over the minimum required, (see Hoist Tackle Chart), is considered excessive and must be accounted for. Use Working Range Diagram to estimate the extra feet (meters) of wire rope. Deduct for each foot of excessive wire rope before attempting to lift a load.

When jibs are erected but unused add three(3) times the weight of any hook block, slings, and auxiliary lifting devices at the jib head to the load.

7. Rated loads do not exceed 85% on outriggers or 75% on tires, of the tipping load as determined by SAE Crane Stability Test Code J765a. Structural strength ratings in chart are indicated with an asterisk (*).
8. Rated loads are based on freely suspended loads. No attempt shall be made to drag a load horizontally on the ground in any direction.
9. The user shall operate at reduced ratings to allow for adverse job conditions, such as: Soft or uneven ground, out of level conditions, high winds, side loads, pendulum action, jerking or sudden stopping of loads, hazardous conditions, experience of personnel, two machine lifts, traveling with loads, electric wires, etc. (side pull on boom or jib is hazardous). Derating of the cranes lifting capacity is required when wind speed exceeds 20 MPH. The center of the lifted load must never be allowed to move more than 3 feet off the center line of the base boom section due to the effects of wind, inertia, or any combination of the two.
*Use 2 feet off the center line of the base boom for a two section boom, 3 feet for a three section boom, or 4 feet for a four section boom.
10. The maximum load which can be telescoped is not definable, because of variations in loadings and crane maintenance, but it is permissible to attempt retraction and extension if load ratings are not exceeded.
11. Load ratings are dependent upon the crane being maintained according to manufacturer's specifications.
12. It is recommended that load handling devices, including hooks, and hook blocks, be kept away from boom head at all times.
13. Do not lift with outrigger beams positioned between the fully extended and intermediate (pinned) positions.
14. FOR TRUCK CRANES ONLY: 360° capacities apply only to machines equipped with a front outrigger jack and all five (5) outrigger jacks properly set. If the front (5th) outrigger jack is not properly set, the work area is restricted to the over side and over rear areas as shown on the Crane Working Positions diagram. Use the 360° load ratings in the overside work areas.



15,200 lbs.



USE THIS CHART ONLY WHEN ALL OUTRIGGERS ARE FULLY EXTENDED

RATED LOAD ON OUTRIGGERS

LOAD RADIUS (FT)	BOOM ANGLE (DEG) REF.	OVER FRONT (LB)	360° (LB)	LOAD RADIUS (FT)	BOOM ANGLE (DEG) REF.	OVER FRONT (LB)	360° (LB)	LOAD RADIUS (FT)	BOOM ANGLE (DEG) REF.	OVER FRONT (LB)	360° (LB)
BOOM LENGTH 40 FT				BOOM LENGTH 54 FT				BOOM LENGTH 66 FT			
10	69.4	160000 *	160000 *	10	75.0	102500 *	102500 *	15	73.3	80600 *	80600 *
12	66.2	125600 *	125600 *	12	72.8	102500 *	102500 *	20	68.6	71900 *	71900 *
15	61.3	108800 *	108800 *	15	69.3	100500 *	100500 *	25	63.8	64800 *	64800 *
20	52.3	84700 *	84700 *	20	63.4	85300 *	85300 *	30	58.7	54400 *	51000 *
25	42.0	65600 *	65600 *	25	57.1	66700 *	66700 *	35	53.3	41000 *	38200 *
30	28.5	52800 *	49200 *	30	50.3	53900 *	50500 *	40	47.5	32000 *	29900 *
33.9	0.0	28500 *	28500 *	35	42.6	40500 *	37700 *	45	41.1	25900 *	24100 *
				40	33.6	31500 *	29400 *	50	33.6	21200 *	19800 *
				45	21.0	25200 *	23500 *	55	24.0	17700 *	16400 *
				47.9	0.0	19000 *	19000 *	59.9	0.0	14100 *	13800 *

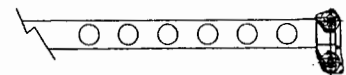
BOOM LENGTH 78 FT			
20	72.1	62200 *	62200 *
25	68.1	55700 *	55700 *
30	64.0	49700 *	49700 *
35	59.8	41200 *	38500 *
40	55.3	32300 *	30200 *
45	50.6	26100 *	24400 *
50	45.5	21600 *	20200 *
55	39.9	18100 *	16900 *
60	33.6	15300 *	14200 *
65	25.8	13000 *	12100 *
70	14.2	11100 *	10300 *
71.9	0.0	10400 *	9600 *

BOOM LENGTH 90 FT			
20	74.6	56200 *	56200 *
25	71.2	48000 *	48000 *
30	67.7	41700 *	41700 *
35	64.2	36600 *	36600 *
40	60.6	32500 *	30400 *
45	56.8	26300 *	24600 *
50	52.8	21800 *	20300 *
55	48.6	18300 *	17100 *
60	44.1	15500 *	14500 *
65	39.1	13200 *	12300 *
70	33.6	11400 *	10600 *
75	27.0	9800 *	9000 *
80	18.2	8400 *	7700 *
83.9	0.0	7400 *	6800 *

BOOM LENGTH 102 FT			
25	73.5	41900 *	41900 *
30	70.5	36400 *	36400 *
35	67.5	32100 *	32100 *
40	64.3	28600 *	28600 *
45	61.1	25700 *	24700 *
50	57.8	21900 *	20500 *
55	54.4	18400 *	17200 *
60	50.8	15600 *	14600 *
65	47.0	13400 *	12500 *
70	42.9	11500 *	10800 *
75	38.5	10000 *	9200 *
80	33.6	8600 *	7900 *
85	27.9	7400 *	6800 *
90	20.7	6400 *	5800 *
95	8.8	5500 *	4900 *
95.9	0.0	5300 *	4700 *

BOOM LENGTH 114 FT			
30	72.6	31500 *	31500 *
35	70.0	29500 *	29500 *
40	67.2	26200 *	26200 *
45	64.5	23500 *	23500 *
50	61.6	21400 *	20600 *
55	58.7	18500 *	17300 *
60	55.6	15700 *	14700 *
65	52.5	13500 *	12600 *
70	49.2	11600 *	10900 *
75	45.7	10100 *	9400 *
80	42.0	8800 *	8100 *
85	38.0	7600 *	6900 *
90	33.6	6600 *	6000 *
95	28.5	5700 *	5100 *
100	22.5	4900 *	4300 *
105	13.9	4100 *	3600 *
107.9	0.0	3700 *	3200 *

BOOM LENGTH 126 FT			
35	72.0	24700 *	24700 *
40	69.5	24600 *	24600 *
45	67.1	22100 *	22100 *
50	64.5	20000 *	20000 *
55	62.0	18200 *	17400 *
60	59.3	15800 *	14800 *
65	56.6	13600 *	12700 *
70	53.8	11700 *	10900 *
75	50.9	10200 *	9400 *
80	47.8	8800 *	8200 *
85	44.6	7700 *	7100 *
90	41.2	6700 *	6100 *
95	37.6	5800 *	5200 *
100	33.6	5000 *	4400 *
105	29.1	4300 *	3700 *
110	23.8	3600 *	3100 *
115	16.9	3100 *	2500 *
119.9	0	2500 *	2000 *



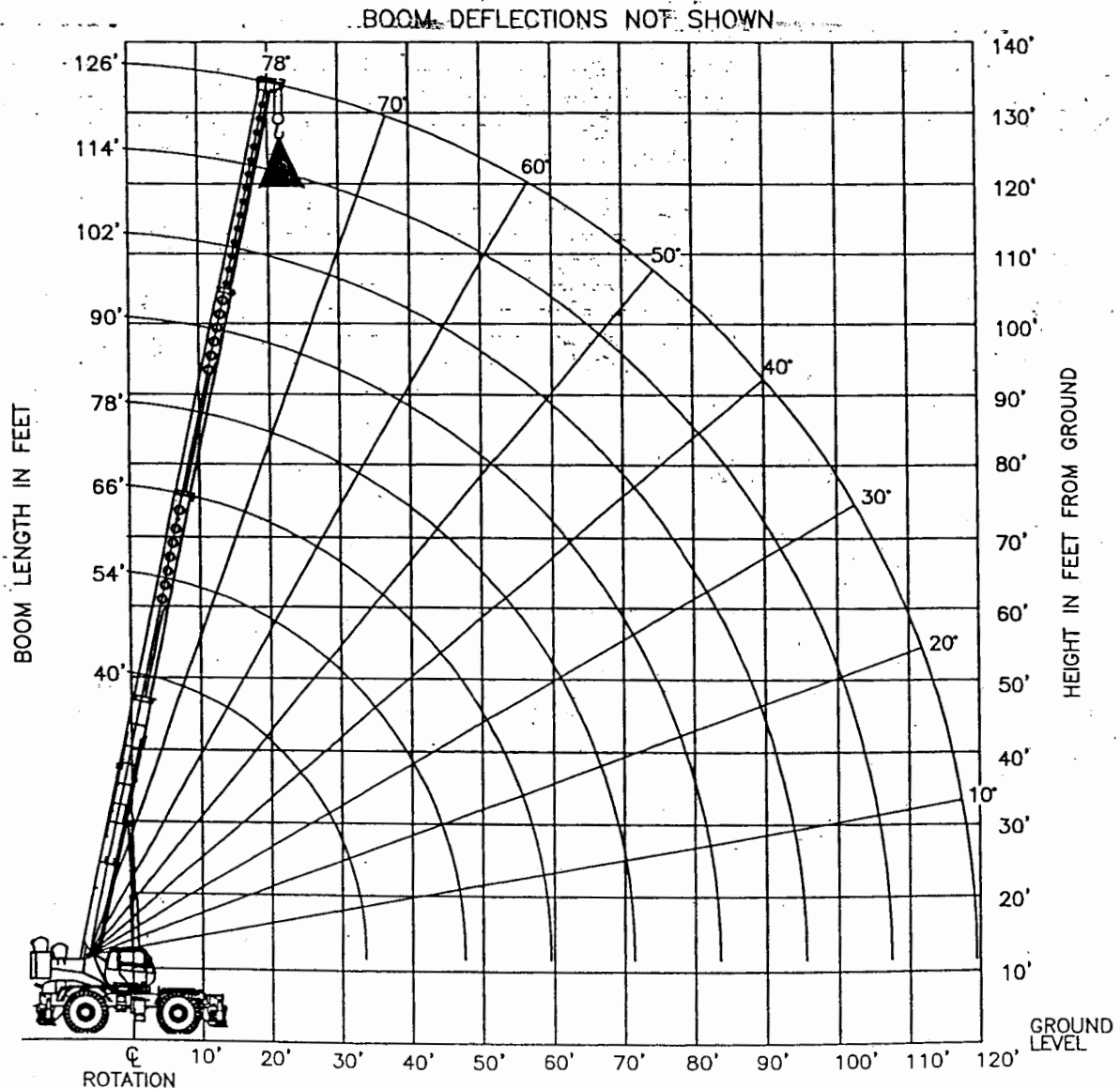
Add 100 lbs to the chart values if the AUXILLIARY BOOM HEAD SHEAVE is NOT ERECTED

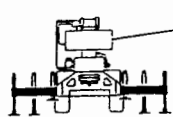
SET-UP:

1. Crane load ratings are based on the crane being leveled and standing on a firm and uniform surface.
2. Crane load ratings on outriggers are based on all outrigger beams being positioned according to the applicable load chart and the tires raised free of the supporting surface.

OPERATION:

1. CRANE LOAD RATINGS MUST NOT BE EXCEEDED. DO NOT ATTEMPT TO TIP THE CRANE TO DETERMINE ALLOWABLE LOADS.
2. When either radius or boom length, or both, are between listed values, the smaller of the two listed load ratings shall be used.
3. EXTRA-CAUTION ZONE - Tipping can occur with some boom/jib combinations at radii within this area without any load on the hook.
4. The boom angles shown on the Capacity Chart give an approximation of the operating radius for a specified boom length. The boom angle, before loading, should be greater to account for boom deflection. It may be necessary to retract the boom if maximum boom angle is insufficient to maintain rated radius.
5. Rated loads include the weight of hook block, slings and auxiliary lifting devices. Their weights shall be subtracted from the listed rated load to obtain the net load that can be lifted. Rated lifting capacities are based on correct reeving. Deductions must be made for excessive reeving. Any reeving over the minimum is considered excessive. Deduct for each foot of excessive wire rope before attempting to lift a load. See the Hoist Tackle Chart for rope information.
6. Power telescoping boom sections must be extended equally.





15,200 lbs.

USE THIS CHART ONLY WHEN ALL OUTRIGGERS ARE FULLY EXTENDED WITH A ERECTED AND UNUSED 33 FT EXTENSION

RATED LOAD ON OUTRIGGERS

LOAD RADIUS (FT)	BOOM ANGLE (DEG) REF.	OVER FRONT (LB)	360° (LB)	LOAD RADIUS (FT)	BOOM ANGLE (DEG) REF.	OVER FRONT (LB)	360° (LB)	LOAD RADIUS (FT)	BOOM ANGLE (DEG) REF.	OVER FRONT (LB)	360° (LB)
BOOM LENGTH 40 FT				BOOM LENGTH 54 FT				BOOM LENGTH 66 FT			
10	69.4	138700 *	138700 *	10	75.0	102500 *	102500 *	15	73.3	80600 *	80600 *
12	66.2	124200 *	124200 *	12	72.8	102500 *	102500 *	20	68.6	71900 *	71900 *
15	61.3	107400 *	107400 *	15	69.3	100500 *	100500 *	25	63.8	64800 *	64800 *
20	52.3	82800 *	82800 *	20	63.4	83700 *	83700 *	30	58.7	52300 *	48600 *
25	42.0	63700 *	63700 *	25	57.1	64700 *	64700 *	35	53.3	38600 *	35800 *
30	28.5	50300 *	46500 *	30	50.3	51800 *	47900 *	40	47.5	29700 *	27600 *
33.9	0.0	26900 *	26900 *	35	42.6	37900 *	35200 *	45	41.1	23500 *	21800 *
				40	33.6	29100 *	27000 *	50	33.6	19000 *	17600 *
				45	21.0	22900 *	21200 *	55	24.0	15500 *	14300 *
				47.9	0.0	17300 *	17300 *	59.9	0.0	12300 *	11600 *

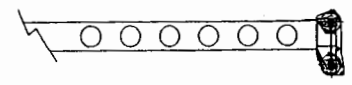
BOOM LENGTH 78 FT			
20	72.1	62200 *	62200 *
25	68.1	55700 *	55700 *
30	64.0	49700 *	49100 *
35	59.8	39000 *	36200 *
40	55.3	30100 *	28000 *
45	50.6	23900 *	22200 *
50	45.5	19300 *	17900 *
55	39.9	15900 *	14700 *
60	33.6	13100 *	12100 *
65	25.8	10800 *	10000 *
70	14.2	9000 *	8200 *
71.9	0.0	8300 *	7500 *

BOOM LENGTH 90 FT			
20	74.6	56200 *	56200 *
25	71.2	48000 *	48000 *
30	67.7	41700 *	41700 *
35	64.2	36600 *	36500 *
40	60.6	30400 *	28200 *
45	56.8	24200 *	22500 *
50	52.8	19600 *	18200 *
55	48.6	16100 *	14900 *
60	44.1	13400 *	12300 *
65	39.1	11100 *	10200 *
70	33.6	9300 *	8500 *
75	27.0	7700 *	7000 *
80	18.2	6300 *	5700 *
83.9	0.0	5400 *	4700 *

BOOM LENGTH 102 FT			
25	73.5	41900 *	41900 *
30	70.5	36400 *	36400 *
35	67.5	32100 *	32100 *
40	64.3	28600 *	28400 *
45	61.1	24400 *	22600 *
50	57.8	19800 *	18400 *
55	54.4	16300 *	15100 *
60	50.8	13500 *	12500 *
65	47.0	11300 *	10400 *
70	42.9	9400 *	8700 *
75	38.5	7900 *	7200 *
80	33.6	6600 *	5900 *
85	27.9	5400 *	4800 *
90	20.7	4400 *	3800 *
95	8.8	3500 *	2900 *
95.9	0.0	3300 *	2700 *

BOOM LENGTH 114 FT			
30	72.6	31500 *	31500 *
35	70.0	29500 *	29500 *
40	67.2	26200 *	26200 *
45	64.5	23500 *	22800 *
50	61.6	19900 *	18500 *
55	58.7	16500 *	15300 *
60	55.6	13700 *	12700 *
65	52.5	11400 *	10500 *
70	49.2	9600 *	8800 *
75	45.7	8000 *	7300 *
80	42.0	6700 *	6000 *
85	38.0	5600 *	4900 *
90	33.6	4600 *	3900 *
95	28.5	3700 *	3100 *
100	22.5	2900 *	2300 *
105	13.9	2200 *	1600 *
107.9	0.0	1800 *	1200 *

BOOM LENGTH 126 FT			
35	72.0	24700 *	24700 *
40	69.5	24600 *	24600 *
45	67.1	22100 *	22100 *
50	64.5	20000 *	18600 *
55	62.0	16600 *	15400 *
60	59.3	13800 *	12800 *
65	56.6	11600 *	10700 *
70	53.8	9700 *	8900 *
75	50.9	8100 *	7400 *
80	47.8	6800 *	6100 *
85	44.6	5700 *	5000 *
90	41.2	4700 *	4100 *
95	37.6	3800 *	3200 *
100	33.6	3000 *	2400 *
105	29.1	2300 *	1800 *
110	23.8	1700 *	1200 *
115	16.9	1100 *	



Add 100 lbs to the chart values if the AUXILLIARY BOOM HEAD SHEAVE is NOT ERECTED

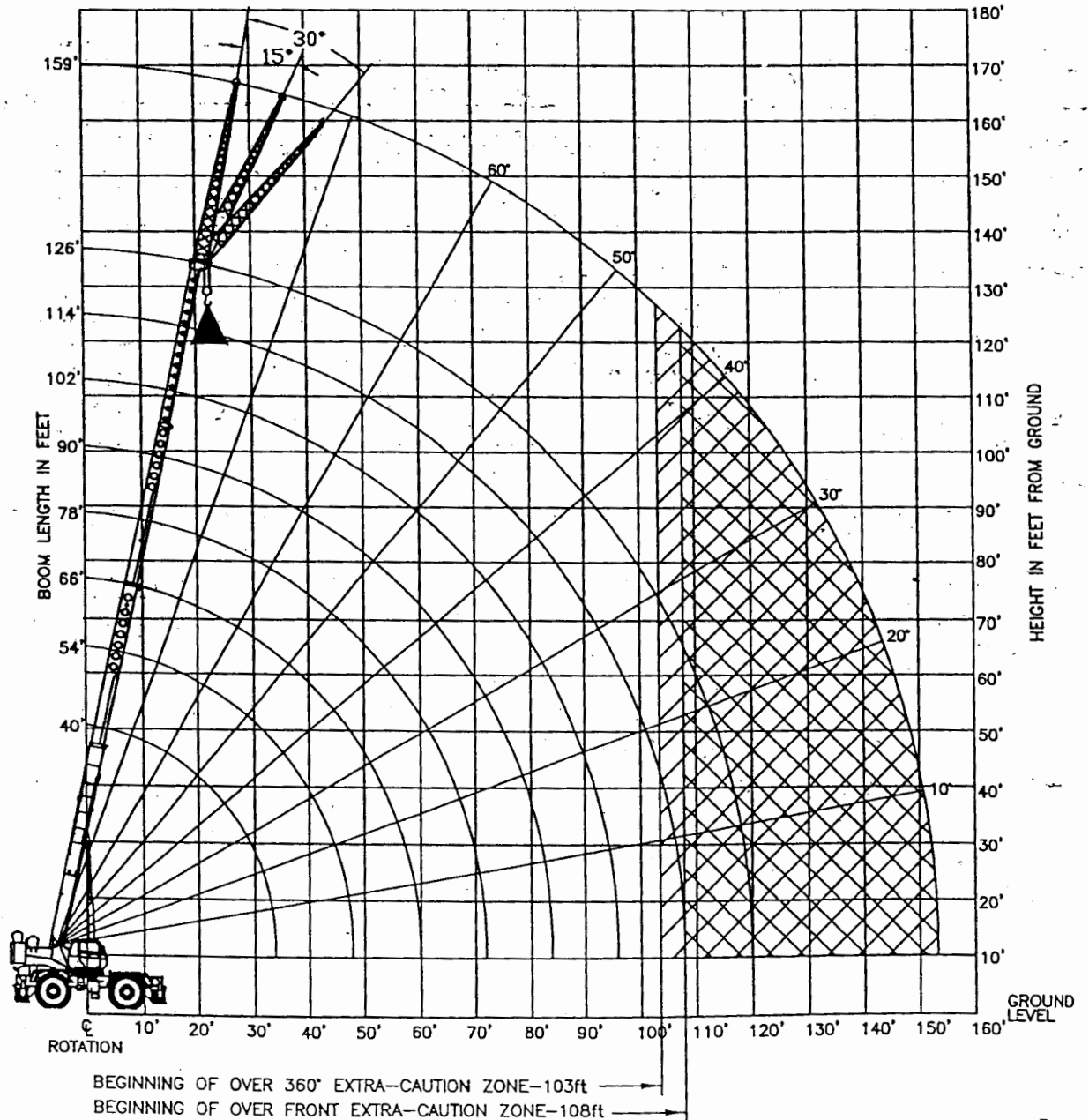
SET-UP:

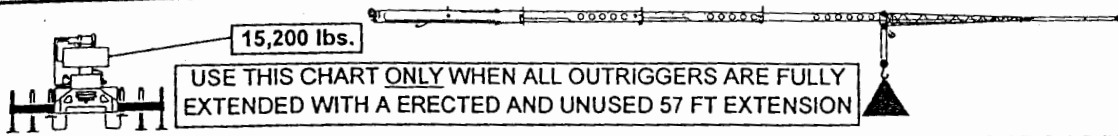
1. Crane load ratings are based on the crane being leveled and standing on a firm and uniform surface.
2. Crane load ratings on outriggers are based on all outrigger beams being positioned according to the applicable load chart and the tires raised free of the supporting surface.

OPERATION:

1. **CRANE LOAD RATINGS MUST NOT BE EXCEEDED... DO NOT ATTEMPT TO TIP THE CRANE TO DETERMINE ALLOWABLE LOADS.**
2. When either radius or boom length, or both, are between listed values, the smaller of the two listed load ratings shall be used.
3. **EXTRA-CAUTION ZONE** - Tipping can occur with some boom/jib combinations at radii within this area without any load on the hook.
4. The boom angles shown on the Capacity Chart give an approximation of the operating radius for a specified boom length. The boom angle, before loading, should be greater to account for boom deflection. It may be necessary to retract the boom if maximum boom angle is insufficient to maintain rated radius.
5. Rated loads include the weight of hook block, slings and auxiliary lifting devices. Their weights shall be subtracted from the listed rated load to obtain the net load that can be lifted. Rated lifting capacities are based on correct reeving. Deductions must be made for excessive reeving. Any reeving over the minimum is considered excessive. Deduct for each foot of excessive wire rope before attempting to lift a load. See the Hoist Tackle Chart for rope information.
6. When the jib is erected and unused add three (3) times the weight of any hookblock, slings, and auxiliary lifting devices at the jib head to the load
7. Power telescoping boom sections must be extended equally.

BOOM DEFLECTIONS NOT SHOWN



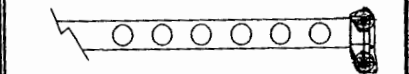


RATED LOAD ON OUTRIGGERS

LOAD RADIUS (FT)	BOOM ANGLE (DEG) REF.	OVER FRONT (LB)	360° (LB)	LOAD RADIUS (FT)	BOOM ANGLE (DEG) REF.	OVER FRONT (LB)	360° (LB)	LOAD RADIUS (FT)	BOOM ANGLE (DEG) REF.	OVER FRONT (LB)	360° (LB)
BOOM LENGTH 40 FT				BOOM LENGTH 54 FT							
10	69.4	138200 *	138200 *	10	75.0	102500 *	102500 *	BOOM LENGTH 66 FT			
12	66.2	123700 *	123700 *	12	72.8	102500 *	102500 *	15	73.3	80600 *	80600 *
15	61.3	107000 *	107000 *	15	69.3	100500 *	100500 *	20	68.6	71900 *	71900 *
20	52.3	82200 *	82200 *	20	63.4	83300 *	83300 *	25	63.8	64700 *	64700 *
25	42.0	63100 *	63100 *	25	57.1	64200 *	64200 *	30	58.7	52000 *	48100 *
30	28.5	49500 *	45600 *	30	50.3	51200 *	47300 *	35	53.3	38100 *	35300 *
33.9	0.0	26400 *	26400 *	35	42.6	37400 *	34600 *	40	47.5	29300 *	27100 *
				40	33.6	28500 *	26400 *	45	41.1	23100 *	21400 *
				45	21.0	22400 *	20700 *	50	33.6	18600 *	17200 *
				47.9	0.0	16900 *	16900 *	55	24.0	15100 *	13900 *
								59.9	0.0	12000 *	11300 *

BOOM LENGTH 78 FT				BOOM LENGTH 90 FT				BOOM LENGTH 102 FT			
20	72.1	62200 *	62200 *	20	74.6	56200 *	56200 *	25	73.5	41900 *	41900 *
25	68.1	55700 *	55700 *	25	71.2	48000 *	48000 *	30	70.5	36400 *	36400 *
30	64.0	49700 *	48600 *	30	67.7	41700 *	41700 *	35	67.5	32100 *	32100 *
35	59.8	38600 *	35800 *	35	64.2	36600 *	36100 *	40	64.3	28600 *	28100 *
40	55.3	29700 *	27600 *	40	60.6	30000 *	27900 *	45	61.1	24100 *	22400 *
45	50.6	23500 *	21800 *	45	56.8	23900 *	22100 *	50	57.8	19500 *	18100 *
50	45.5	19000 *	17600 *	50	52.8	19300 *	17900 *	55	54.4	16100 *	14900 *
55	39.9	15500 *	14300 *	55	48.6	15800 *	14600 *	60	50.8	13300 *	12300 *
60	33.6	12800 *	11800 *	60	44.1	13100 *	12100 *	65	47.0	11100 *	10200 *
65	25.8	10500 *	9700 *	65	39.1	10900 *	10000 *	70	42.9	9200 *	8400 *
70	14.2	8700 *	7900 *	70	33.6	9000 *	8200 *	75	38.5	7700 *	6900 *
71.9	0.0	8000 *	7300 *	75	27.0	7400 *	6700 *	80	33.6	6300 *	5700 *
				80	18.2	6100 *	5400 *	85	27.9	5200 *	4600 *
				83.9	0.0	5100 *	4500 *	90	20.7	4200 *	3600 *
								95	8.8	3300 *	2700 *
								95.9	0.0	3100 *	2500 *

BOOM LENGTH 114 FT				BOOM LENGTH 126 FT			
30	72.6	31500 *	31500 *	35	72.0	24700 *	24700 *
35	70.0	29500 *	29500 *	40	69.5	24600 *	24600 *
40	67.2	26200 *	26200 *	45	67.1	22100 *	22100 *
45	64.5	23500 *	22600 *	50	64.5	19900 *	18400 *
50	61.6	19700 *	18300 *	55	62.0	16400 *	15200 *
55	58.7	16200 *	15000 *	60	59.3	13600 *	12600 *
60	55.6	13500 *	12400 *	65	56.6	11400 *	10500 *
65	52.5	11200 *	10300 *	70	53.8	9500 *	8700 *
70	49.2	9400 *	8600 *	75	50.9	8000 *	7300 *
75	45.7	7800 *	7100 *	80	47.8	6600 *	6000 *
80	42.0	6500 *	5800 *	85	44.6	5500 *	4900 *
85	38.0	5400 *	4700 *	90	41.2	4500 *	3900 *
90	33.6	4400 *	3800 *	95	37.6	3600 *	3000 *
95	28.5	3500 *	2900 *	100	33.6	2800 *	2300 *
100	22.5	2700 *	2100 *	105	29.1	2100 *	1600 *
105	13.9	2000 *	1400 *	110	23.8	1500 *	1000 *
107.9	0.0	1600 *	1100 *				



Add 100 lbs to the chart values if the AUXILIARY BOOM HEAD SHEAVE is NOT ERECTED

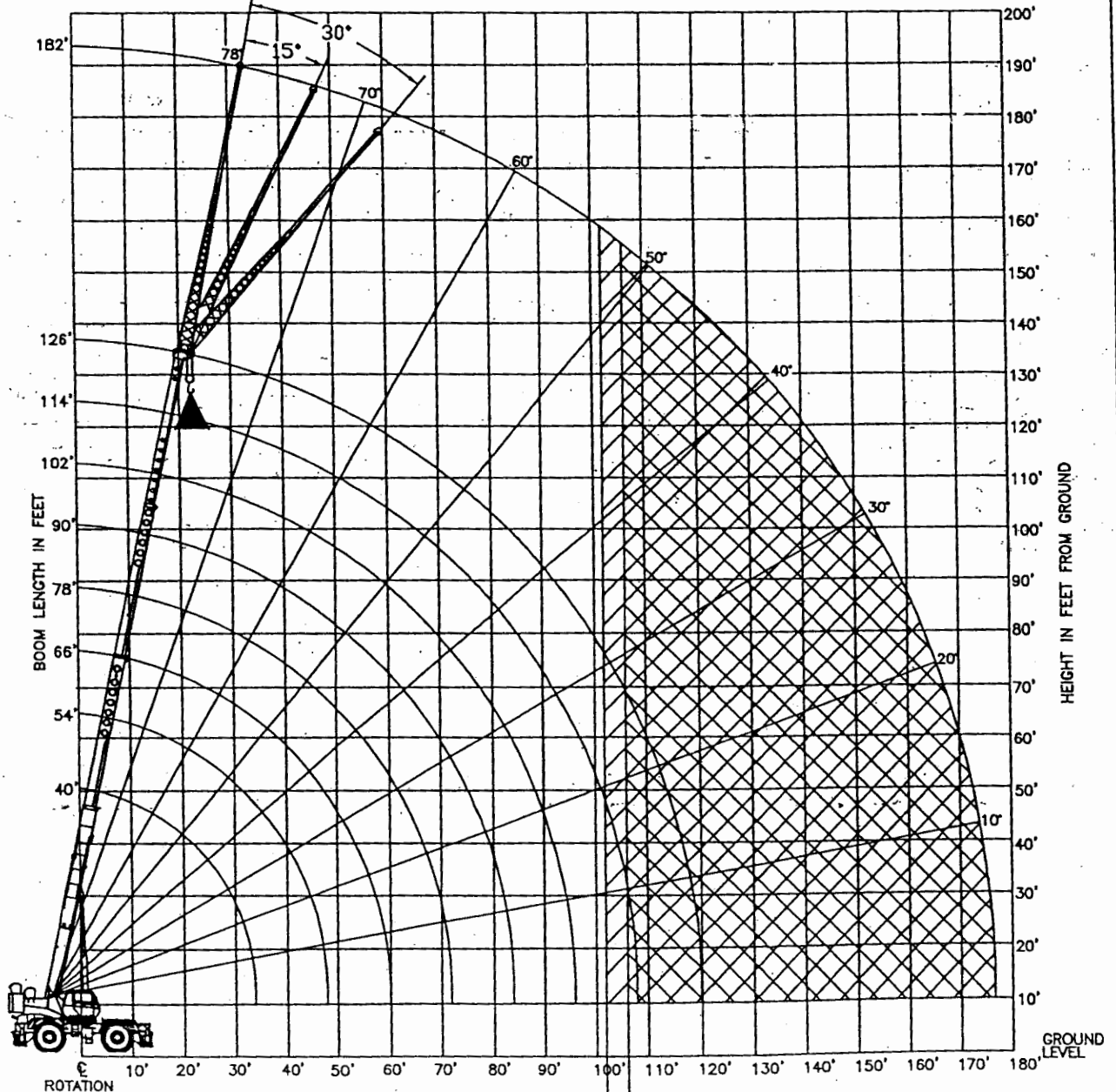
SET-UP:

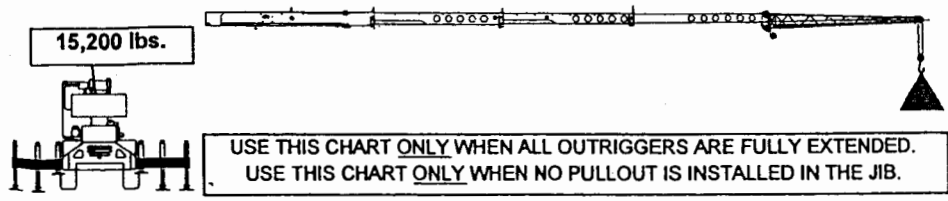
1. Crane load ratings are based on the crane being leveled and standing on a firm and uniform surface.
2. Crane load ratings on outriggers are based on all outrigger beams being positioned according to the applicable load chart and the tires raised free of the supporting surface.

OPERATION:

1. CRANE LOAD RATINGS MUST NOT BE EXCEEDED. DO NOT ATTEMPT TO TIP THE CRANE TO DETERMINE ALLOWABLE LOADS.
2. When either radius or boom length, or both, are between listed values, the smaller of the two listed load ratings shall be used.
3. EXTRA-CAUTION ZONE - Tipping can occur with some boom/jib combinations at radii within this area without any load on the hook.
4. The boom angles shown on the Capacity Chart give an approximation of the operating radius for a specified boom length. The boom angle, before loading, should be greater to account for boom deflection. It may be necessary to retract the boom if maximum boom angle is insufficient to maintain rated radius.
5. Rated loads include the weight of hook block, slings and auxiliary lifting devices. Their weights shall be subtracted from the listed rated load to obtain the net load that can be lifted. Rated lifting capacities are based on correct reeving. Deductions must be made for excessive reeving. Any reeving over the minimum is considered excessive. Deduct for each foot of excessive wire rope before attempting to lift a load. See the Hoist Tackle Chart for rope information.
6. When the jib is erected and unused add three (3) times the weight of any hookblock, slings, and auxiliary lifting devices at the jib head to the load
7. Power telescoping boom sections must be extended equally.

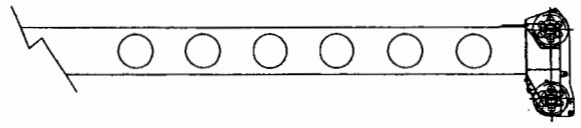
BOOM DEFLECTIONS NOT SHOWN





32 FT OFFSET JIB

LOADED BOOM ANGLE (DEG)	0° OFFSET			15° OFFSET			30° OFFSET		
	(REF) LOAD RADIUS (FT)	FRONT ONLY (LB)	360° (LB)	(REF) LOAD RADIUS (FT)	FRONT ONLY (LB)	360° (LB)	(REF) LOAD RADIUS (FT)	FRONT ONLY (LB)	360° (LB)
77	41	12500 *	12500 *	50	8400 *	8400 *	57	6500 *	6500 *
75	46	11800 *	11800 *	55	8100 *	8100 *	61	6300 *	6300 *
73	51	11200 *	11200 *	60	7700 *	7700 *	66	6200 *	6200 *
71	57	10300 *	10300 *	66	7300 *	7300 *	71	5900 *	5900 *
68	65	9500 *	9500 *	73	7000 *	7000 *	78	5800 *	5800 *
65	73	8800 *	8800 *	80	6700 *	6700 *	85	5600 *	5600 *
62	80	8200 *	8200 *	87	6400 *	6400 *	92	5400 *	5400 *
59	87	7600 *	7600 *	94	6100 *	6100 *	98	5200 *	5200 *
55	96	6900 *	6500 *	102	5800 *	5800 *	106	5100 *	5100 *
51	104	5700 *	5300 *	110	5400 *	5000 *	113	4900 *	4900 *
47	112	4700 *	4300 *	116	4500 *	4100 *	119	4200 *	4200 *
43	119	4000 *	3600 *	123	3800 *	3400 *	125	3500 *	3500 *
38	126	3200 *	2900 *	130	3000 *	2800 *	131	2900 *	2600 *
32	134	2600 *	2200 *	137	2400 *	2100 *	137	2300 *	1800 *
25	141	2000 *	1600 *	142	1900 *	1600 *			



ADD 100 lbs to the chart values if the
AUX BOOM HEAD SHEAVE is NOT
ERECTED

SET-UP:

- 1 Crane load ratings are based on the crane being leveled and standing on a firm, uniform supporting surface.
- 2 Crane load ratings on outriggers are based on all outriggers being fully extended, or in the case of partial extension ratings mechanically pinned in the appropriate position, and the tires free of the supporting surface.

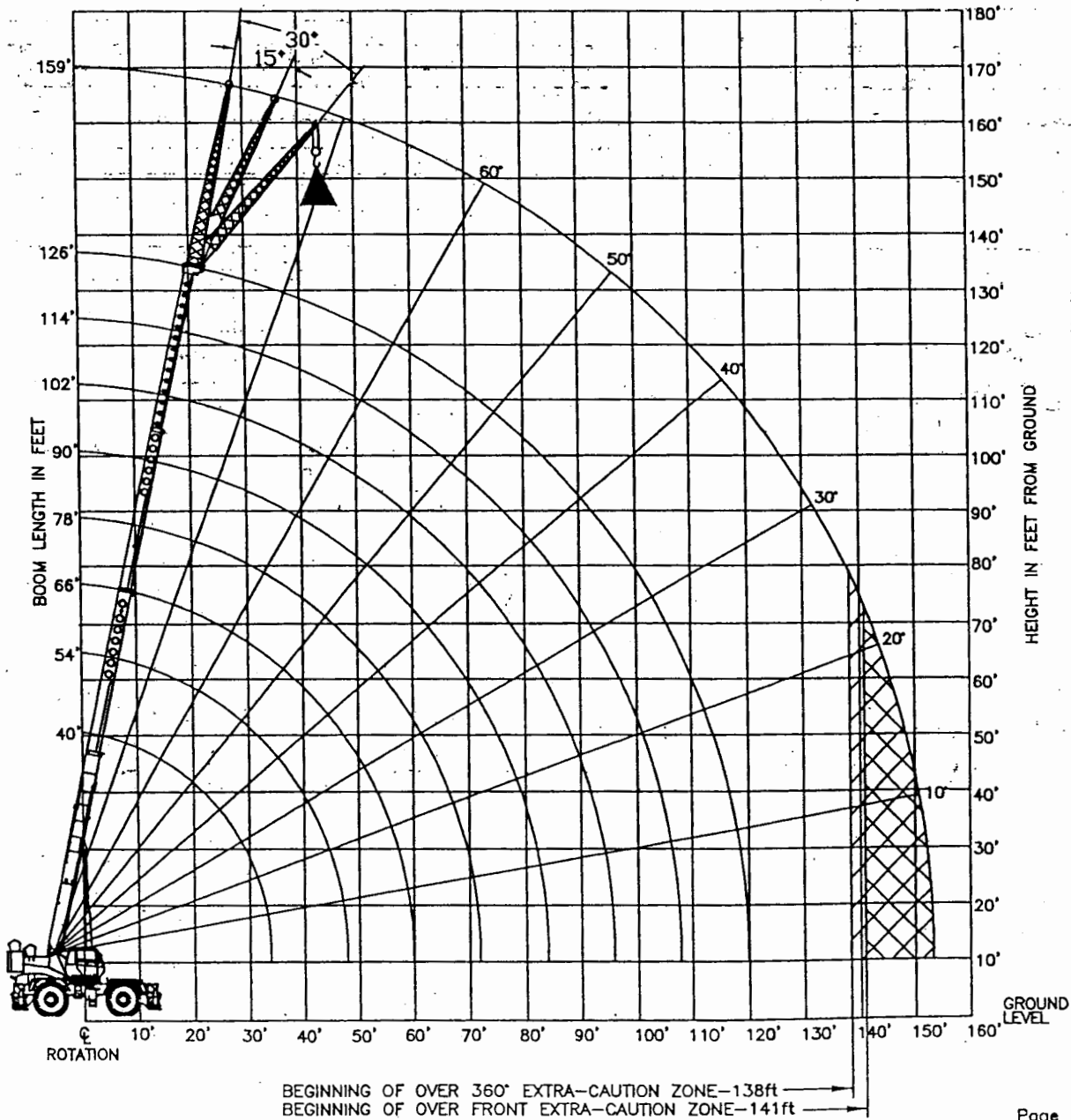
SET-UP:

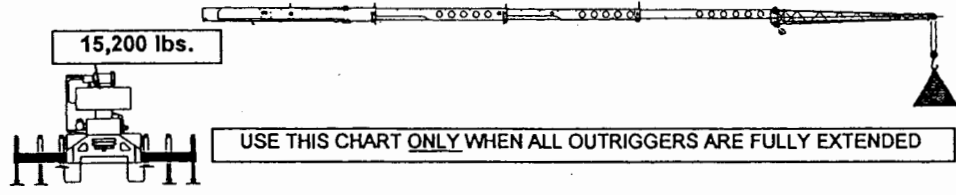
1. Crane load ratings are based on the crane being leveled and standing on a firm and uniform surface.
2. Crane load ratings on outriggers are based on all outrigger beams being positioned according to the applicable load chart and the tires raised free of the supporting surface.

OPERATION:

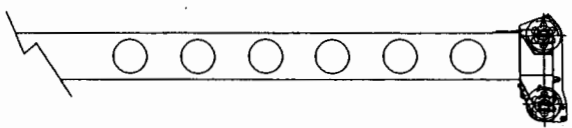
1. CRANE LOAD RATINGS MUST NOT BE EXCEEDED. DO NOT ATTEMPT TO TIP THE CRANE TO DETERMINE ALLOWABLE LOADS.
2. For boom angles not shown, use the capacity of the next lower angle.
3. EXTRA-CAUTION ZONE - Tipping can occur with some boom/jib combinations at radii within this area without any load on the hook.
4. The boom angles shown on the Capacity Chart give an approximation of the operating radius for a specified boom length. The boom angle, before loading, should be greater to account for boom deflection. It may be necessary to retract the boom if maximum boom angle is insufficient to maintain rated radius. Listed radii are for fully extended boom only.
5. Rated loads include the weight of hook block, slings and auxiliary lifting devices. Their weights shall be subtracted from the listed rated load to obtain the net load that can be lifted. Rated lifting capacities are based on correct reeving. Deductions must be made for excessive reeving. Any reeving over the minimum is considered excessive. Deduct for each foot of excessive wire rope before attempting to lift a load. See the Hoist Tackle Chart for rope information.
6. When lifting over the jib the weight of any hook block, slings, and any auxiliary lifting devices at the boom head must be added to the load.
7. For all boom length less than the listed boom length, the rated load is to be determined by boom angle.
8. Listed radii are for fully extended boom only.

BOOM DEFLECTIONS NOT SHOWN





33 FT OFFSET JIB									
	0° OFFSET			15° OFFSET			30° OFFSET		
LOADED BOOM ANGLE (DEG)	(REF) LOAD RADIUS (FT)	FRONT ONLY (LB)	360° (LB)	(REF) LOAD RADIUS (FT)	FRONT ONLY (LB)	360° (LB)	(REF) LOAD RADIUS (FT)	FRONT ONLY (LB)	360° (LB)
77	41	12500 *	12500 *	50	8500 *	8500 *	57	6400 *	6400 *
75	47	12000 *	12000 *	56	8100 *	8100 *	62	6200 *	6200 *
73	52	11500 *	11500 *	61	7800 *	7800 *	67	6100 *	6100 *
71	58	10900 *	10900 *	67	7500 *	7500 *	72	5900 *	5900 *
68	66	9900 *	9900 *	74	7100 *	7100 *	79	5900 *	5900 *
65	74	9200 *	9200 *	81	6700 *	6700 *	86	5600 *	5600 *
62	81	8900 *	8600	88	6400 *	6400 *	93	5400 *	5400 *
59	88	7600	7300	95	6200 *	6200 *	99	5300 *	5300 *
55	97	6200	5700	103	5700	5200	107	5200 *	5200 *
51	105	5000	4500	111	4700	4200	114	4300	4300
47	113	4000	3600	117	3800	3400	120	3500	3500
43	120	3200	2900	124	3100	2700	126	2800	2800
38	127	2500	2200	131	2300	2000	132	2200	1900
32	135	1900	1600	138	1700	1400	138	1600	1100
25	143	1300		144	1200				



ADD 100 lbs to the chart values if the AUX BOOM HEAD SHEAVE is NOT ERECTED

SET-UP:

- 1 Crane load ratings are based on the crane being leveled and standing on a firm, uniform supporting surface.
- 2 Crane load ratings on outriggers are based on all outriggers being fully extended, or in the case of partial extension ratings mechanically pinned in the appropriate position, and the tires free of the supporting surface.

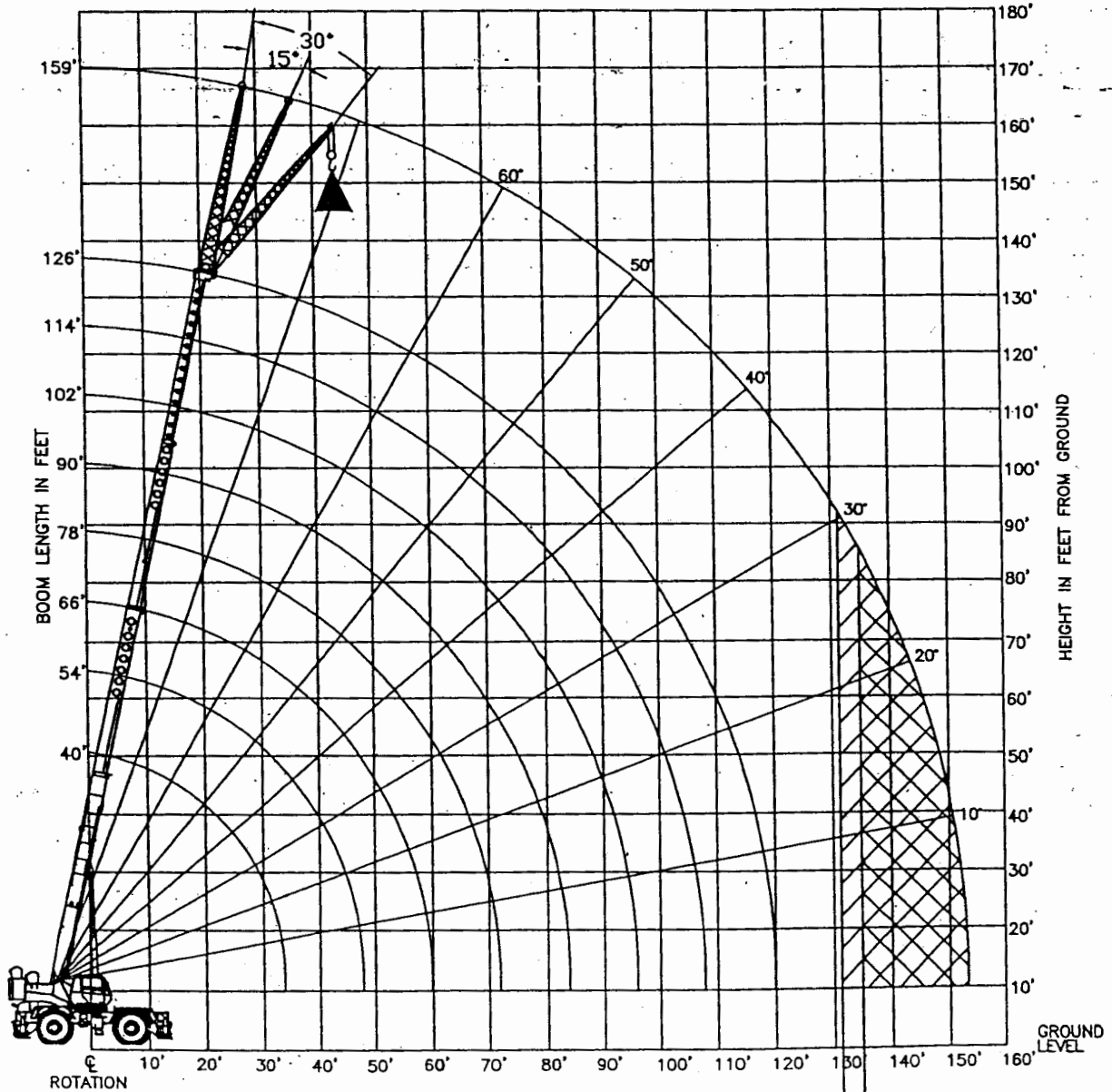
SET-UP:

1. Crane load ratings are based on the crane being leveled and standing on a firm and uniform surface.
2. Crane load ratings on outriggers are based on all outrigger beams being positioned according to the applicable load chart and the tires raised free of the supporting surface.

OPERATION:

1. CRANE LOAD RATINGS MUST NOT BE EXCEEDED. DO NOT ATTEMPT TO TIP THE CRANE TO DETERMINE ALLOWABLE LOADS.
2. For boom angles not shown, use the capacity of the next lower angle.
3. EXTRA-CAUTION ZONE - Tipping can occur with some boom/jib combinations at radii within this area without any load on the hook.
4. The boom angles shown on the Capacity Chart give an approximation of the operating radius for a specified boom length. The boom angle, before loading, should be greater to account for boom deflection. It may be necessary to retract the boom if maximum boom angle is insufficient to maintain rated radius. Listed radii are for fully extended boom only.
5. Rated loads include the weight of hook block, slings and auxiliary lifting devices. Their weights shall be subtracted from the listed rated load to obtain the net load that can be lifted. Rated lifting capacities are based on correct reeving. Deductions must be made for excessive reeving. Any reeving over the minimum is considered excessive. Deduct for each foot of excessive wire rope before attempting to lift a load. See the Hoist Tackle Chart for rope information.
6. When lifting over the jib the weight of any hook block, slings, and any auxiliary lifting devices at the boom head must be added to the load.
7. For all boom length less than the listed boom length, the rated load is to be determined by boom angle.
8. Listed radii are for fully extended boom only.

BOOM DEFLECTIONS NOT SHOWN



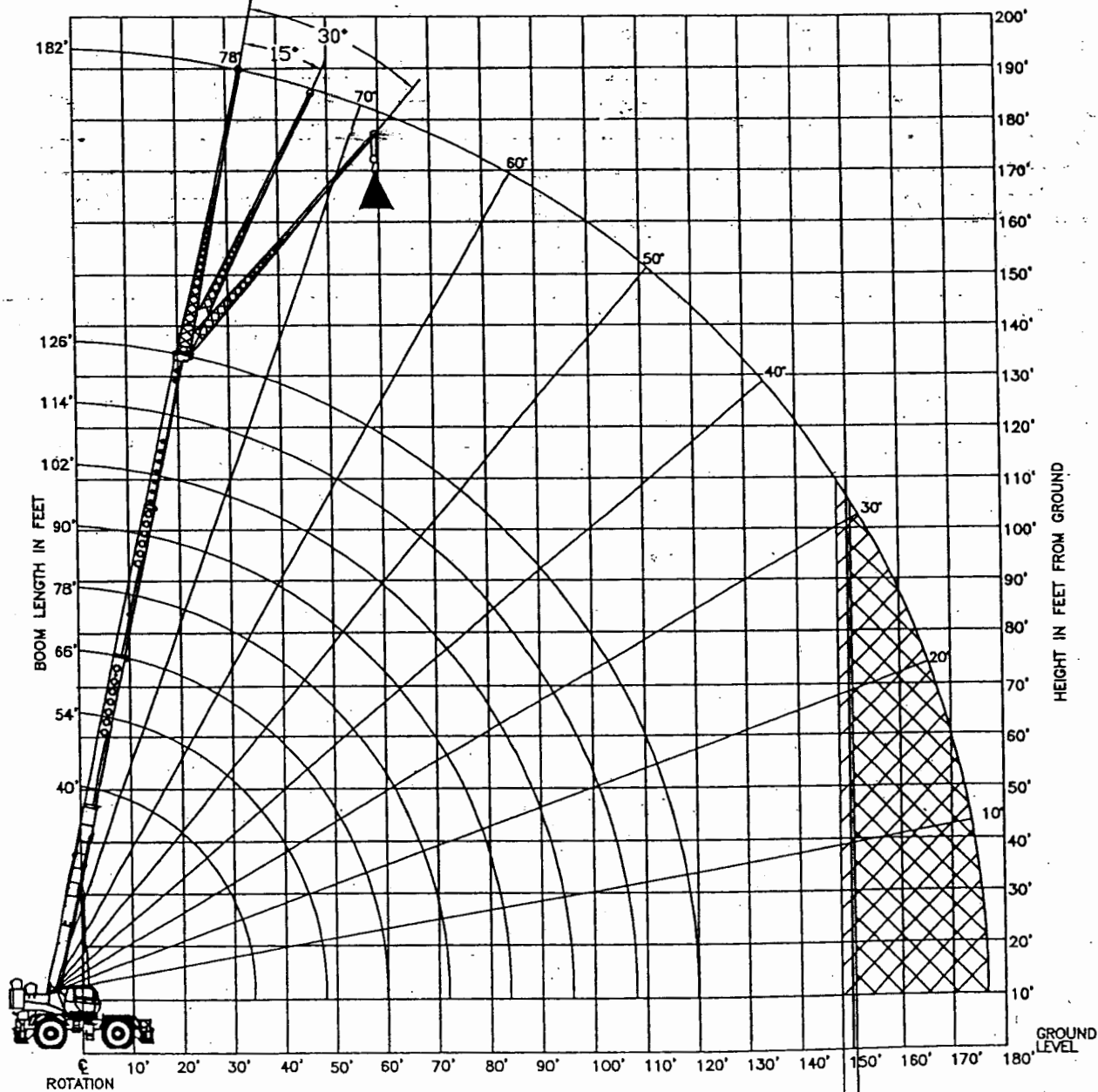
SET-UP:

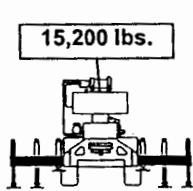
1. Crane load ratings are based on the crane being leveled and standing on a firm and uniform surface.
2. Crane load ratings on outriggers are based on all outrigger beams being positioned according to the applicable load chart and the tires raised free of the supporting surface.

OPERATION:

1. CRANE LOAD RATINGS MUST NOT BE EXCEEDED. DO NOT ATTEMPT TO TIP THE CRANE TO DETERMINE ALLOWABLE LOADS.
2. For boom angles not shown, use the capacity of the next lower angle.
3. EXTRA-CAUTION ZONE - Tipping can occur with some boom/jib combinations at radii within this area without any load on the hook.
4. The boom angles shown on the Capacity Chart give an approximation of the operating radius for a specified boom length. The boom angle, before loading, should be greater to account for boom deflection. It may be necessary to retract the boom if maximum boom angle is insufficient to maintain rated radius. Listed radii are for fully extended boom only.
5. Rated loads include the weight of hook block, slings and auxiliary lifting devices. Their weights shall be subtracted from the listed rated load to obtain the net load that can be lifted. Rated lifting capacities are based on correct reeving. Deductions must be made for excessive reeving. Any reeving over the minimum is considered excessive. Deduct for each foot of excessive wire rope before attempting to lift a load. See the Hoist Tackle Chart for rope information.
6. When lifting over the jib the weight of any hook block, slings, and any auxiliary lifting devices at the boom head must be added to the load.
7. For all boom length less than the listed boom length, the rated load is to be determined by boom angle.
8. Power telescoping boom sections must be extended equally.

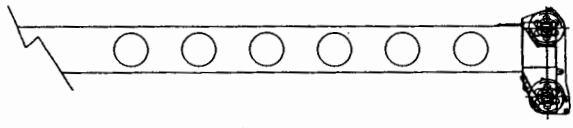
BOOM DEFLECTIONS NOT SHOWN





USE THIS CHART ONLY WHEN ALL OUTRIGGERS ARE FULLY EXTENDED

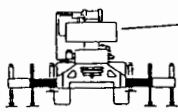
57 FT OFFSET JIB									
LOADED BOOM ANGLE (DEG)	0° OFFSET			15° OFFSET			30° OFFSET		
	(REF) LOAD RADIUS (FT)	FRONT ONLY (LB)	360° (LB)	(REF) LOAD RADIUS (FT)	FRONT ONLY (LB)	360° (LB)	(REF) LOAD RADIUS (FT)	FRONT ONLY (LB)	360° (LB)
77	48	6500 *	6500 *	66	4500 *	4500 *	75	3300 *	3300 *
75	56	6400 *	6400 *	72	4300 *	4300 *	81	3200 *	3200 *
73	63	6200 *	6200 *	77	4100 *	4100 *	87	3100 *	3100 *
71	70	6000 *	6000 *	83	3900 *	3900 *	92	3000 *	3000 *
68	80	5400 *	5400 *	91	3700 *	3700 *	100	2900 *	2900 *
65	90	4900 *	4900 *	99	3500 *	3500 *	108	2800 *	2800 *
62	98	4500 *	4500 *	106	3300 *	3300 *	115	2700 *	2700 *
59	106	4200 *	4200 *	114	3100 *	3100 *	121	2600 *	2600 *
55	116	3800 *	3800 *	123	2900 *	2900 *	129	2500 *	2500 *
51	125	3500 *	3500 *	132	2800 *	2800 *	137	2500 *	2500 *
47	133	2900 *	2800 *	140	2700 *	2600 *	143	2400 *	2400 *
43	140	2400 *	2200 *	147	2300 *	2100 *	149	2300 *	2000 *
38	148	1800 *	1600 *	154	1700 *	1500 *	155	1700 *	1500 *
32	157	1300 *	1000 *	161	1200 *	1000 *	162	1200 *	1000 *
25	165	800 *							



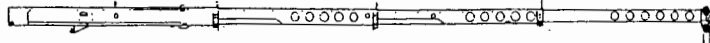
ADD 100 lbs to the chart values if the AUX BOOM HEAD SHEAVE is NOT ERECTED

SET-UP:

- 1 Crane load ratings are based on the crane being leveled and standing on a firm, uniform supporting surface.
- 2 Crane load ratings on outriggers are based on all outriggers being fully extended, or in the case of partial extension ratings mechanically pinned in the appropriate position, and the tires free of the supporting surface.



15,200 lbs.



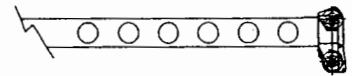
USE THIS CHART ONLY WHEN ALL OUTRIGGERS ARE IN THE MID POSITION

RATED LOAD ON OUTRIGGERS

LOAD RADIUS (FT)	BOOM ANGLE (DEG) REF.	360° (LB)	LOAD RADIUS (FT)	BOOM ANGLE (DEG) REF.	360° (LB)	LOAD RADIUS (FT)	BOOM ANGLE (DEG) REF.	360° (LB)
BOOM LENGTH 40 FT			BOOM LENGTH 54 FT			BOOM LENGTH 66 FT		
10	69.4	150000 *	10	75.0	102500 *	15	73.3	80600 *
12	66.2	125600 *	12	72.8	102500 *	20	68.6	56600
15	61.3	103000	15	69.3	100500 *	25	63.8	37200
20	52.3	55000	20	63.4	56100	30	58.7	26700
25	42.0	35500	25	57.1	36700	35	53.3	20100
30	28.5	24900	30	50.3	26200	40	47.5	15500
33.9	0.0	19400	35	42.6	19500	45	41.1	12100
			40	33.6	14900	50	33.6	9600
			45	21.0	11600	55	24.0	7600
			47.9	0.0	9900	59.9	0.0	5900

BOOM LENGTH 78 FT			BOOM LENGTH 90 FT			BOOM LENGTH 102 FT		
20	72.1	56900	20	74.6	56200 *	25	73.5	37800
25	68.1	37400	25	71.2	37700	30	70.5	27300
30	64.0	26900	30	67.7	27100	35	67.5	20700
35	59.8	20400	35	64.2	20500	40	64.3	16200
40	55.3	15900	40	60.6	16000	45	61.1	12900
45	50.6	12500	45	56.8	12700	50	57.8	10400
50	45.5	10000	50	52.8	10200	55	54.4	8400
55	39.9	8000	55	48.6	8200	60	50.8	6800
60	33.6	6300	60	44.1	6600	65	47.0	5400
65	25.8	5000	65	39.1	5200	70	42.9	4300
70	14.2	3800	70	33.6	4100	75	38.5	3400
71.9	0.0	3400	75	27.0	3200	80	33.6	2500

BOOM LENGTH 114 FT			BOOM LENGTH 126 FT		
30	72.6	27400	35	72.0	20900
35	70.0	20800	40	69.5	16300
40	67.2	16300	45	67.1	13000
45	64.5	13000	50	64.5	10500
50	61.6	10500	55	62.0	8600
55	58.7	8500	60	59.3	7000
60	55.6	6900	65	56.6	5700
65	52.5	5600	70	53.8	4600
70	49.2	4500	75	50.9	3600
75	45.7	3500	80	47.8	2800
80	42.0	2700			



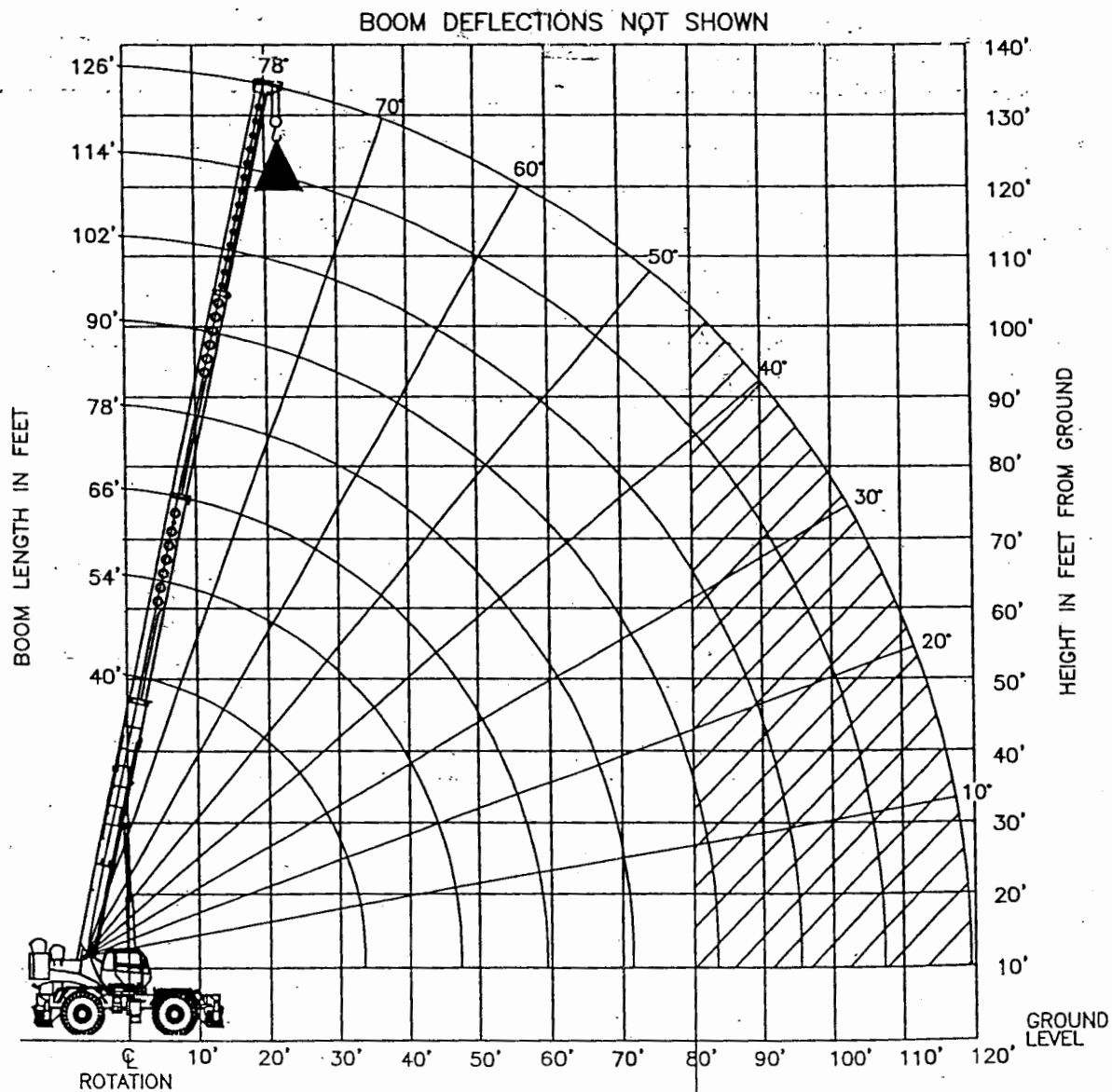
Add 100 lbs to the chart values if the AUXILLIARY BOOM HEAD SHEAVE is NOT ERECTED

T-UP:

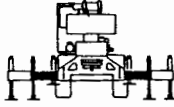
1. Crane load ratings are based on the crane being leveled and standing on a firm and uniform surface.
2. Crane load ratings on outriggers are based on all outrigger beams being positioned according to the applicable load chart and the tires raised free of the supporting surface.

OPERATION:

1. CRANE LOAD RATINGS MUST NOT BE EXCEEDED. DO NOT ATTEMPT TO TIP THE CRANE TO DETERMINE ALLOWABLE LOADS.
2. When either radius or boom length, or both, are between listed values, the smaller of the two listed load ratings shall be used.
3. EXTRA-CAUTION ZONE - Tipping can occur with some boom/jib combinations at radii within this area without any load on the hook.
4. The boom angles shown on the Capacity Chart give an approximation of the operating radius for a specified boom length. The boom angle, before loading, should be greater to account for boom deflection. It may be necessary to retract the boom if maximum boom angle is insufficient to maintain rated radius.
5. Rated loads include the weight of hook block, slings and auxiliary lifting devices. Their weights shall be subtracted from the listed rated load to obtain the net load that can be lifted. Rated lifting capacities are based on correct reeving. Deductions must be made for excessive reeving. Any reeving over the minimum is considered excessive. Deduct for each foot of excessive wire rope before attempting to lift a load. See the Hoist Tackle Chart for rope information.
6. Power telescoping boom sections must be extended equally.



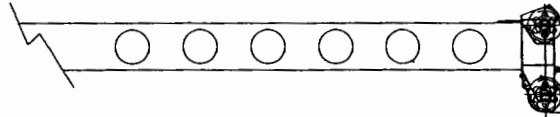
15,200 lbs.



USE THIS CHART ONLY WHEN ALL OUTRIGGERS ARE IN THE MID POSITION.
USE THIS CHART ONLY WHEN NO PULLOUT IS INSTALLED IN THE JIB.

32 FT OFFSET JIB

LOADED BOOM ANGLE (DEG)	0° OFFSET		15° OFFSET		30° OFFSET	
	(REF) LOAD RADIUS (FT)	360° (LB)	(REF) LOAD RADIUS (FT)	360° (LB)	(REF) LOAD RADIUS (FT)	360° (LB)
77	40	12500 *	50	8400 *	56	6500 *
75	45	11800 *	54	8100 *	60	6300 *
73	51	11200 *	59	7700 *	65	6200 *
71	56	9700	64	7300 *	70	5900 *
68	64	7400	72	6200	77	5800 *
65	71	5700	79	4900	84	4600
62	78	4300	85	3800	90	3500
59	85	3300				



ADD 100 lbs to the chart values if the
AUX BOOM HEAD SHEAVE is NOT
ERECTED

SET-UP:

- 1 Crane load ratings are based on the crane being leveled and standing on a firm, uniform supporting surface.
- 2 Crane load ratings on outriggers are based on all outriggers being fully extended, or in the case of partial extension ratings mechanically pinned in the appropriate position, and the tires free of the supporting surface.

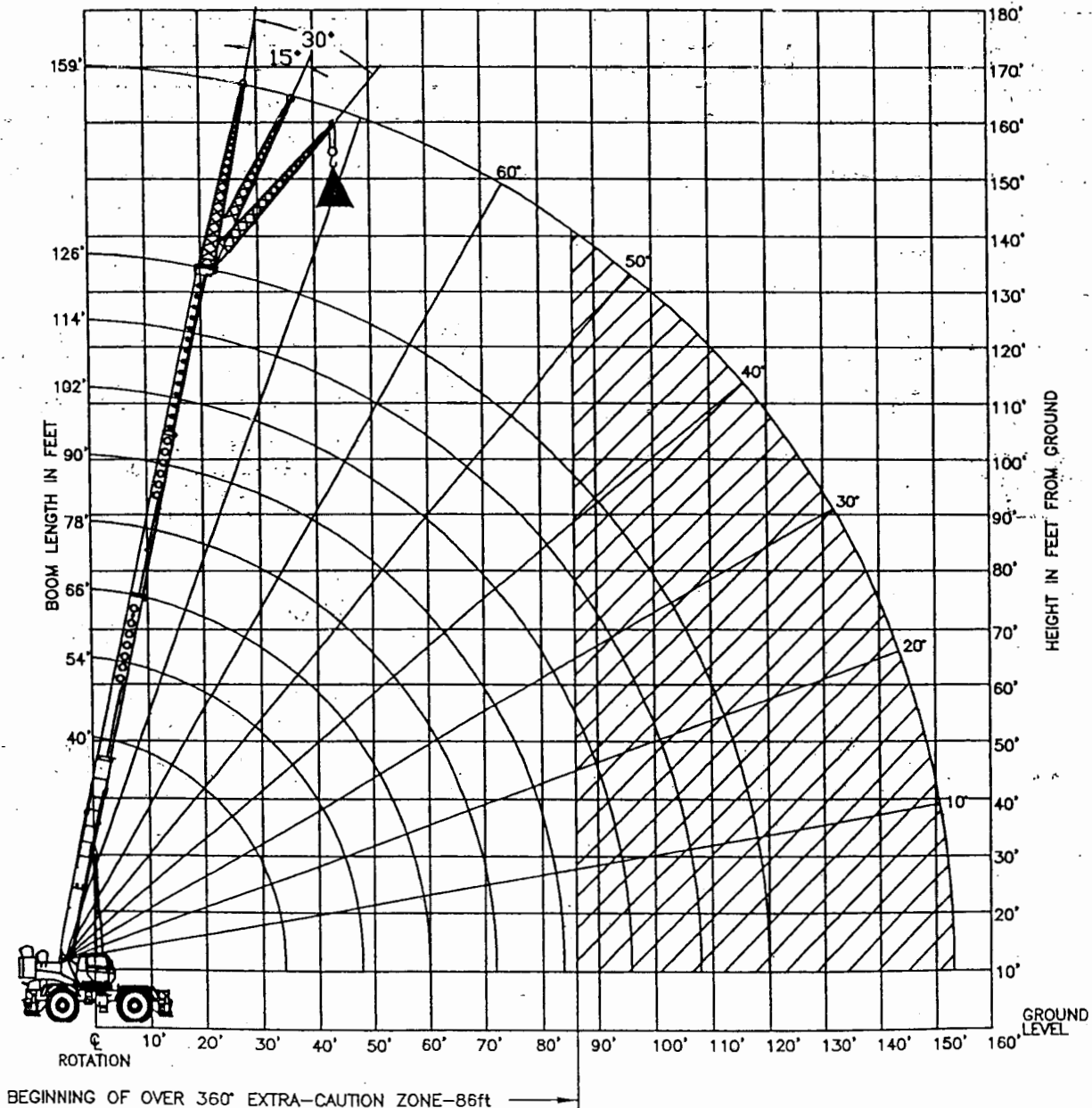
SET-UP:

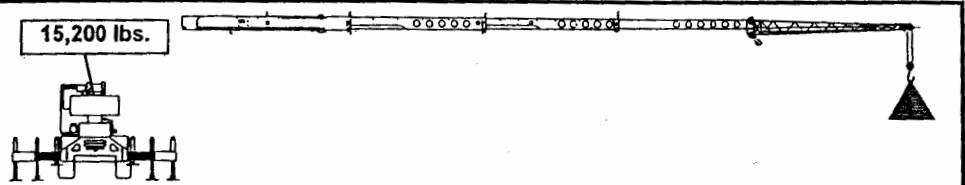
1. Crane load ratings are based on the crane being leveled and standing on a firm and uniform surface.
2. Crane load ratings on outriggers are based on all outrigger beams being positioned according to the applicable load chart and the tires raised free of the supporting surface.

OPERATION:

1. CRANE LOAD RATINGS MUST NOT BE EXCEEDED. DO NOT ATTEMPT TO TIP THE CRANE TO DETERMINE ALLOWABLE LOADS.
2. For boom angles not shown; use the capacity of the next lower angle.
3. EXTRA-CAUTION ZONE - Tipping can occur with some boom/jib combinations at radii within this area without any load on the hook.
4. The boom angles shown on the Capacity Chart give an approximation of the operating radius for a specified boom length. The boom angle, before loading, should be greater to account for boom deflection. It may be necessary to retract the boom if maximum boom angle is insufficient to maintain rated radius. Listed radii are for fully extended boom only.
5. Rated loads include the weight of hook block, slings and auxiliary lifting devices. Their weights shall be subtracted from the listed rated load to obtain the net load that can be lifted. Rated lifting capacities are based on correct reeving. Deductions must be made for excessive reeving. Any reeving over the minimum is considered excessive. Deduct for each foot of excessive wire rope before attempting to lift a load. See the Hoist Tackle Chart for rope information.
6. When lifting over the jib the weight of any hook block, slings, and any auxiliary lifting devices at the boom head must be added to the load.
7. For all boom length less than the listed boom length, the rated load is to be determined by boom angle.
8. Listed radii are for fully extended boom only.

BOOM DEFLECTIONS NOT SHOWN





USE THIS CHART ONLY WHEN ALL OUTRIGGERS ARE IN THE MID POSITION.

33 FT OFFSET JIB							
		0° OFFSET		15° OFFSET		30° OFFSET	
LOADED BOOM ANGLE (DEG)	(REF) LOAD RADIUS (FT)	360° (LB.)		(REF) LOAD RADIUS (FT)	360° (LB.)		
			*			*	
77	40	12500	*	50	8400	56	6500 *
75	46	11800	*	55	8100	61	6300 *
73	52	10500		60	7400	66	6200 *
71	57	8700		65	6600	71	5900 *
68	65	6500		73	5300	78	5000
65	72	4900		80	4100	85	3800
62	79	3600		86	3000	91	2800
59	86	2600					



ADD 100 lbs to the chart values if the AUX BOOM HEAD SHEAVE is NOT ERECTED

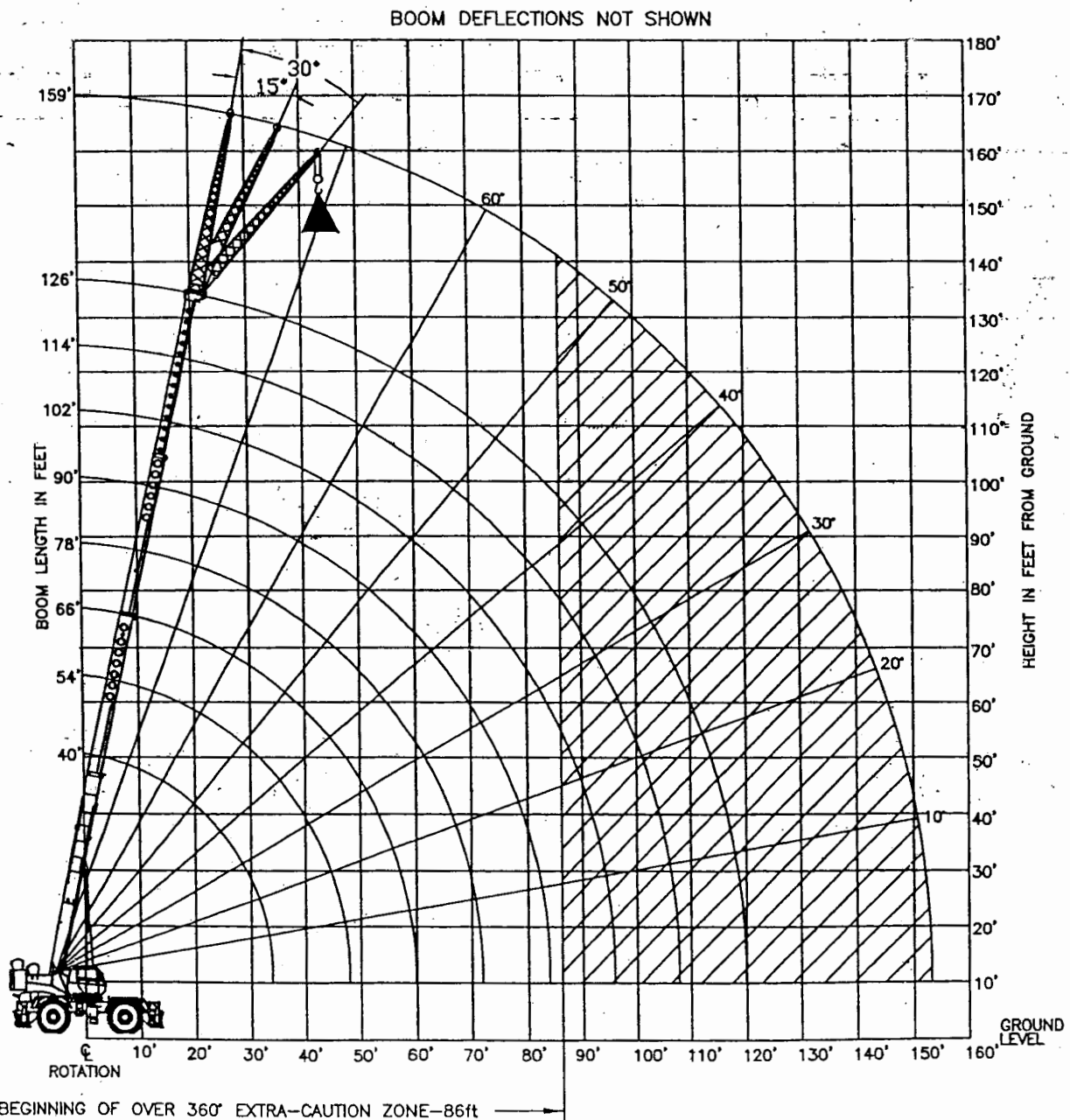
SET-UP:

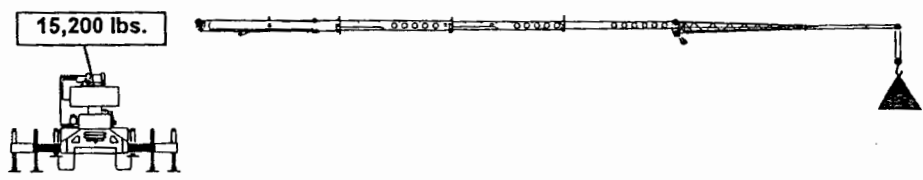
- 1 Crane load ratings are based on the crane being leveled and standing on a firm, uniform supporting surface.
- 2 Crane load ratings on outriggers are based on all outriggers being fully extended, or in the case of partial extension ratings mechanically pinned in the appropriate position, and the tires free of the supporting surface.

- Crane load ratings on outriggers are based on all outrigger beams being positioned according to the applicable load chart and the tires raised free of the supporting surface.

OPERATION:

- CRANE LOAD RATINGS MUST NOT BE EXCEEDED. DO NOT ATTEMPT TO TIP THE CRANE TO DETERMINE ALLOWABLE LOADS.
- For boom angles not shown, use the capacity of the next lower angle.
- EXTRA-CAUTION ZONE - Tipping can occur with some boom/jib combinations at radii within this area without any load on the hook.
- The boom angles shown on the Capacity Chart give an approximation of the operating radius for a specified boom length. The boom angle, before loading, should be greater to account for boom deflection. It may be necessary to retract the boom if maximum boom angle is insufficient to maintain rated radius. Listed radii are for fully extended boom only.
- Rated loads include the weight of hook block, slings and auxiliary lifting devices. Their weights shall be subtracted from the listed rated load to obtain the net load that can be lifted. Rated lifting capacities are based on correct reeving. Deductions must be made for excessive reeving. Any reeving over the minimum is considered excessive. Deduct for each foot of excessive wire rope before attempting to lift a load. See the Hoist Tackle Chart for rope information.
- When lifting over the jib the weight of any hook block, slings, and any auxiliary lifting devices at the boom head must be added to the load.
- For all boom length less than the listed boom length, the rated load is to be determined by boom angle.
- Listed radii are for fully extended boom only.





USE THIS CHART ONLY WHEN ALL OUTRIGGERS ARE IN THE MID POSITION.

57 FT OFFSET JIB							
		0° OFFSET		15° OFFSET		30° OFFSET	
LOADED BOOM ANGLE (DEG)	(REF) LOAD RADIUS (FT)	360° (LB)	(REF) LOAD RADIUS (FT)	360° (LB)	(REF) LOAD RADIUS (FT)	360° (LB)	
77	49	6500 *	66	4500 *	76	3300 *	
75	56	6100 *	72	4300 *	81	3200 *	
73	63	5600	78	4100 *	87	3100 *	
71	69	5000	84	3800 *	92	3000 *	
68	78	4100	92	3400	100	2900 *	
65	87	3300	99	2700	107	2500	
62	95	2600					



ADD 100 lbs to the chart values if the AUX BOOM HEAD SHEAVE is NOT ERECTED

SET-UP:

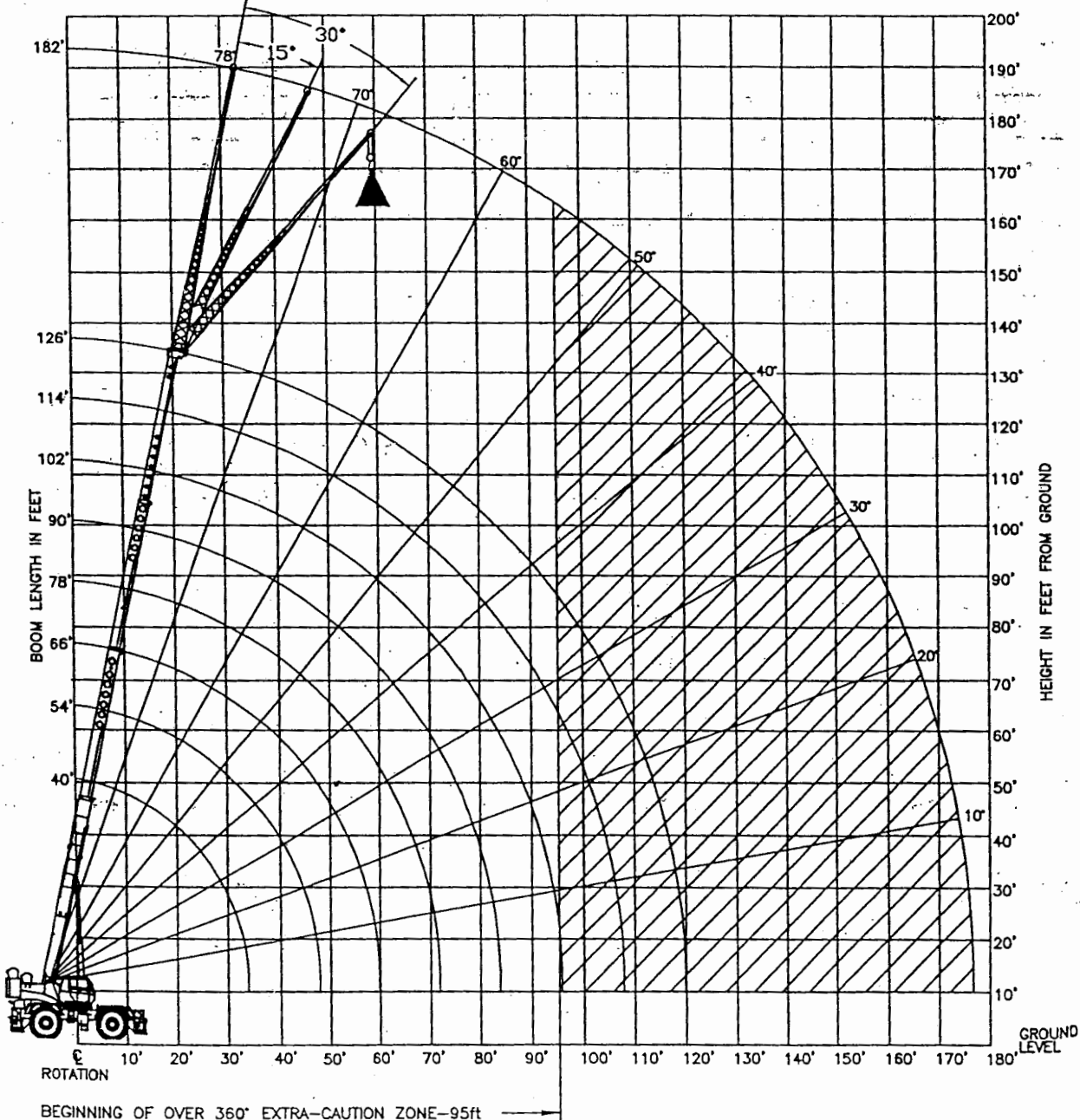
- 1 Crane load ratings are based on the crane being leveled and standing on a firm, uniform supporting surface.
- 2 Crane load ratings on outriggers are based on all outriggers being fully extended, or in the case of partial extension ratings mechanically pinned in the appropriate position, and the tires free of the supporting surface.

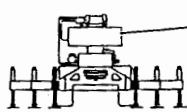
1. Crane load ratings are based on the crane being leveled and standing on a firm and uniform surface.
2. Crane load ratings on outriggers are based on all outrigger beams being positioned according to the applicable load chart and the tires raised free of the supporting surface.

OPERATION:

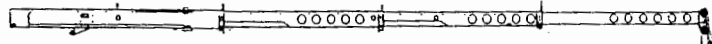
1. CRANE LOAD RATINGS MUST NOT BE EXCEEDED. DO NOT ATTEMPT TO TIP THE CRANE TO DETERMINE ALLOWABLE LOADS.
2. For boom angles not shown, use the capacity of the next lower angle.
3. EXTRA-CAUTION ZONE — Tipping can occur with some boom/jib combinations at radii within this area without any load on the hook.
4. The boom angles shown on the Capacity Chart give an approximation of the operating radius for a specified boom length. The boom angle, before loading, should be greater to account for boom deflection. It may be necessary to retract the boom if maximum boom angle is insufficient to maintain rated radius. Listed radii are for fully extended boom only.
5. Rated loads include the weight of hook block, slings and auxiliary lifting devices. Their weights shall be subtracted from the listed rated load to obtain the net load that can be lifted. Rated lifting capacities are based on correct reeving. Deductions must be made for excessive reeving. Any reeving over the minimum is considered excessive. Deduct for each foot of excessive wire rope before attempting to lift a load. See the Hoist Tackle Chart for rope information.
6. When lifting over the jib the weight of any hook block, slings, and any auxiliary lifting devices at the boom head must be added to the load.
7. For all boom length less than the listed boom length, the rated load is to be determined by boom angle.
8. Power telescoping boom sections must be extended equally.

BOOM DEFLECTIONS NOT SHOWN





15,200 lbs.



USE THIS CHART ONLY WHEN ALL OUTRIGGERS ARE FULLY RETRACTED

RATED LOAD ON OUTRIGGERS

LOAD RADIUS (FT)	BOOM ANGLE (DEG) REF.	360° (LB)	LOAD RADIUS (FT)	BOOM ANGLE (DEG) REF.	360° (LB)	LOAD RADIUS (FT)	BOOM ANGLE (DEG) REF.	360° (LB)
BOOM LENGTH 40 FT			BOOM LENGTH 54 FT			BOOM LENGTH 66 FT		
10	69.4	84500	10	75.0	85600	15	73.3	40800
12	66.2	59300	12	72.8	60300	20	68.6	24800
15	61.3	39300	15	69.3	40400	25	63.8	16500
20	52.3	23200	20	63.4	24300	30	58.7	11400
25	42.0	14900	25	57.1	16000	35	53.3	8000
30	28.5	9800	30	50.3	10900	40	47.5	5600
33.9	0.0	6900	35	42.6	7500	45	41.1	3700
			40	33.6	5000			
			45	21.0	3200			

BOOM LENGTH 78 FT			BOOM LENGTH 90 FT			BOOM LENGTH 102 FT		
20	72.1	25000	20	74.6	25200	25	73.5	17000
25	68.1	16800	25	71.2	17000	30	70.5	12000
30	64.0	11800	30	67.7	12000	35	67.5	8600
35	59.8	8400	35	64.2	8600	40	64.3	6100
40	55.3	5900	40	60.6	6100	45	61.1	4300
45	50.6	4000	45	56.8	4300			

BOOM LENGTH 114 FT			BOOM LENGTH 126 FT		
30	72.6	12100	35	72.0	8900
35	70.0	8800	40	69.5	6500
40	67.2	6300	45	67.1	4700
45	64.5	4500	50	64.5	3300
50	61.6	3000			

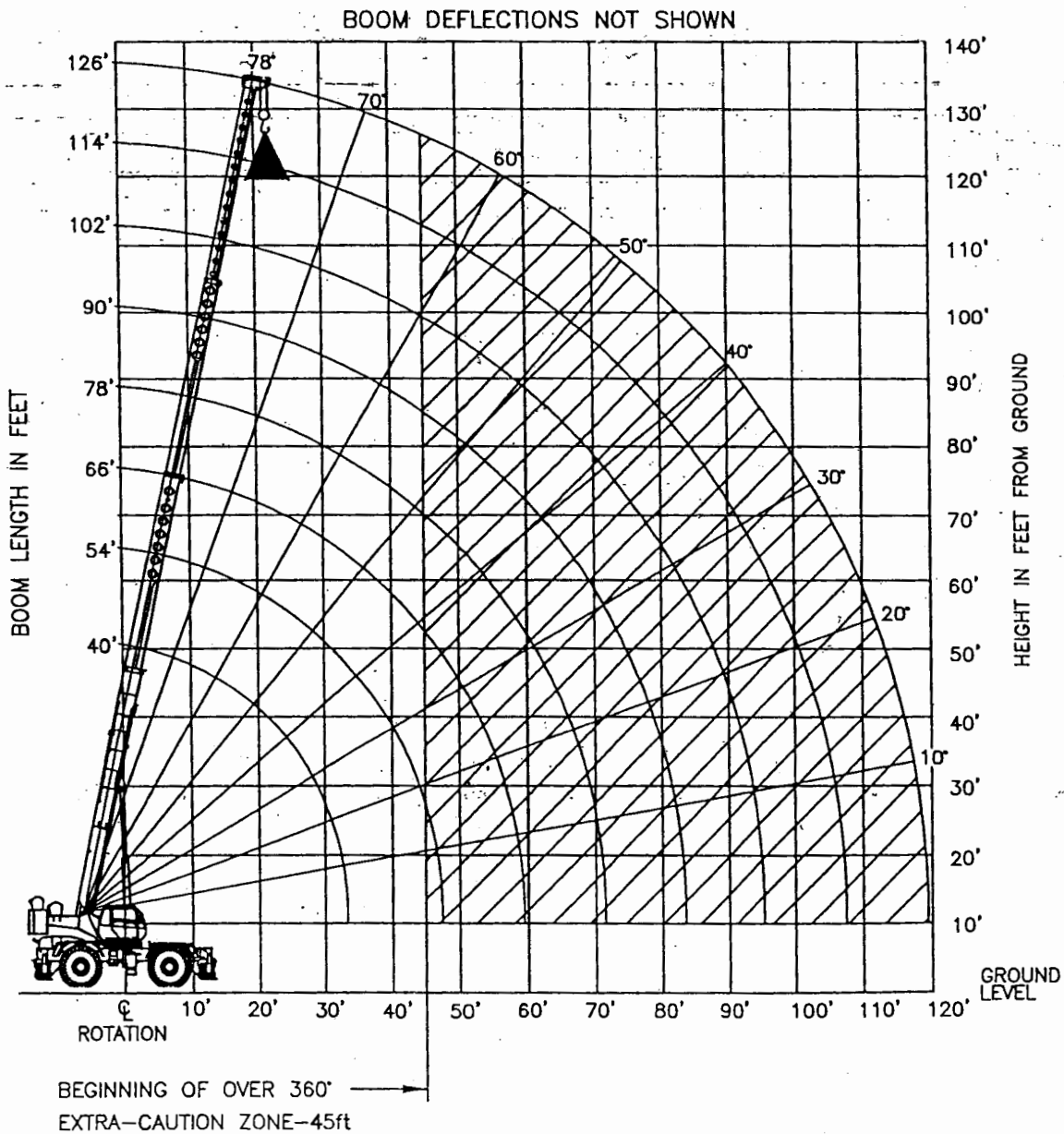


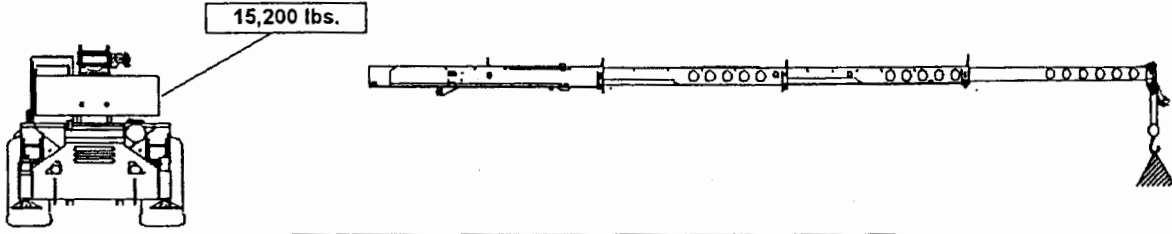
Add 100 lbs to the chart values if the AUXILLIARY BOOM HEAD SHEAVE is NOT ERECTED

1. Crane load ratings are based on the crane being leveled and standing on a firm and uniform surface.
2. Crane load ratings on outriggers are based on all outrigger beams being positioned according to the applicable load chart and the tires raised free of the supporting surface.

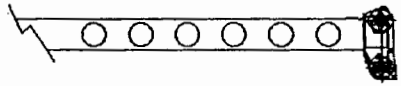
OPERATION:

1. CRANE LOAD RATINGS MUST NOT BE EXCEEDED. DO NOT ATTEMPT TO TIP THE CRANE TO DETERMINE ALLOWABLE LOADS.
2. When either radius or boom length, or both, are between listed values, the smaller of the two listed load ratings shall be used.
3. EXTRA-CAUTION ZONE - Tipping can occur with some boom/jib combinations at radii within this area without any load on the hook.
4. The boom angles shown on the Capacity Chart give an approximation of the operating radius for a specified boom length. The boom angle, before loading, should be greater to account for boom deflection. It may be necessary to retract the boom if maximum boom angle is insufficient to maintain rated radius.
5. Rated loads include the weight of hook block, slings and auxiliary lifting devices. Their weights shall be subtracted from the listed rated load to obtain the net load that can be lifted. Rated lifting capacities are based on correct reeving. Deductions must be made for excessive reeving. Any reeving over the minimum is considered excessive. Deduct for each foot of excessive wire rope before attempting to lift a load. See the Hoist Tackle Chart for rope information.
6. Power telescoping boom sections must be extended equally.





ON TIRES					
RADIUS (FT)	MAX BOOM LENGTH (FT)	29.5 X 25 28PR			
		STATIONARY		PICK & CARRY	
		STATIC		CREEP	2.5
		360°	STRAIGHT OVER FRONT		
10	40	47900	82700*	68700*	51800*
12	40	40500	69800*	60400*	45300*
15	40	30000	54200	50700*	37600*
20	40	20100	36000	36000	28700*
25	54	13700	24900	24700	22500*
30	54	9300	18200	18200	17800*
35	54	6600	14200	14200	14200
40	66	4900	11600	11600	11100
45	66	3400	9600	9600	9000
50	66	2300	7900	7900	7900
55	78	1500	6300	6300	6300
60	78		4900	4900	4900
65	78		3300	3300	3300
70	90		3100	3100	3100
75	90		2700	2700	2700
80	90		2200	2200	2200



Add 100 lbs to the chart values if the AUX BOOM HEAD SHEAVE is NOT ERECTED.

SET-UP:

- 1 Crane load ratings are based on the crane being leveled and standing on a firm, uniform supporting surface.
- 2 Crane load ratings on tires depend on appropriate inflation pressure and tire condition. Caution must be exercised when increasing air pressures in tires. Consult Operator's Manual for precautions.
- 3 Use of jibs, lattice-type boom extensions, or fourth section pull-out extended is not permitted for pick and carry operations.

INQUIPCO
Las Vegas • San Bernardino

RENTALS / SALES / PARTS / SERVICE

<p>LAS VEGAS 2730 N. HELLIS BLVD. LAS VEGAS, NV 89115</p>	<p>1-800-598-3465</p>	<p>SAN BERNARDINO 1185 E. COOLEY AVENUE SAN BERNARDINO, CA 92408</p>
---	------------------------------	--

WWW.INQUIPCO.COM